

80p

EN ROSEB

OLDHAM

# Athletic

OFFICIAL  
MATCHDAY MAGAZINE  
OF OLDHAM ATHLETIC  
A.F.C. LTD.,

SEASON 1989-90

ATHLETIC  
v  
SWINDON  
TOWN

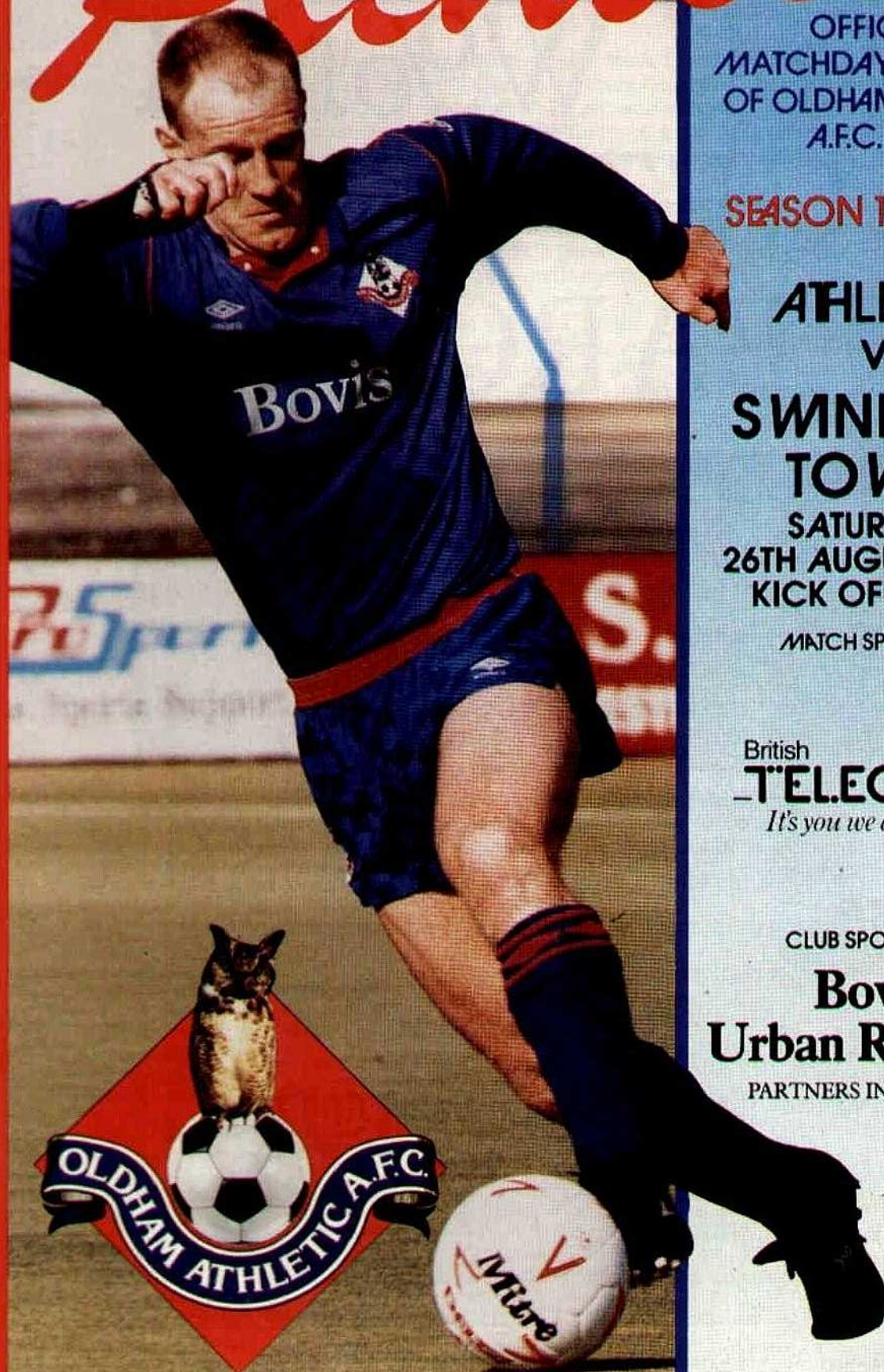
SATURDAY  
26TH AUGUST 1989  
KICK OFF 3 PM

MATCH SPONSOR:

British  
**TELECOM**  
*It's you we answer to*

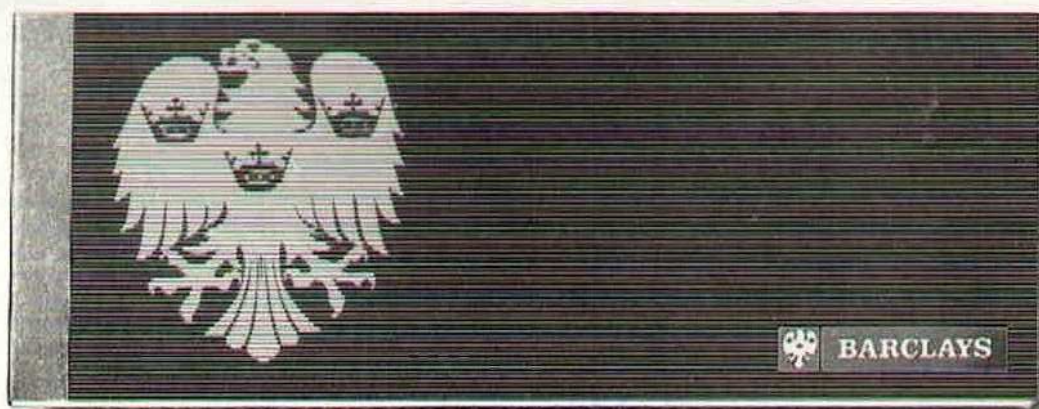
CLUB SPONSORS:

**Bovis**  
**Urban Renewal**  
PARTNERS IN PROGRESS





# PENALTIES? YOU WON'T GET ANY AT BARCLAYS.



With The Barclays Bank Account you won't be charged for everyday transactions like cheques, credits and standing orders.

It has three options, two of which pay interest, and you can simply switch between them as your needs change.

Call into your local Barclays branch for further details. The Barclays Bank Account, in a league of its own.



THE BARCLAYS BANK ACCOUNT IS A CURRENT ACCOUNT FOR PERSONAL CUSTOMERS. AN OVERDRAFT FACILITY IS ONLY AVAILABLE ON APPLICATION. INTEREST RATES MAY VARY. WRITTEN DETAILS ARE AVAILABLE FROM BARCLAYS BANK PLC PERSONAL SECTOR MARKETING, JUXON HOUSE, 91 ST. PAUL'S CHURCHYARD, LONDON EC4M 9EH. MEMBER OF IMRO.





## DID YOU HEAR ABOUT...

- ..... **CHRIS BLUNDELL** who is currently over in New Zealand playing for Waikato United. Well to supplement his wage whilst he's over there he's been working for Hamilton Aerospace Corporation. Chris starts work at 7.30 am and works until 5.30 pm, training begins at 6.30 pm and goes on until 9.30 pm! Plus there's the 15 miles round trip from work — to digs — to the club ground — it's an easy life being a footballer!!
- ..... **YOUNG** goalkeeper David Wall, whose car wouldn't start last week when he had finished training. David checked the spark plugs, distributor, fan belt and battery before calling in at the office for help — now I'm not a genius when it comes to cars — but I do know they need filling with petrol more than once a month!
- ..... **ANDY RHODES**, who whilst he was in the Town Square Shopping Centre signing autographs as part of the Latics Roadshow, was desperate for a drink so he popped into a nearby shop and emerged with cokes and orange for all the lads (Bunny, Milly, Marshy, etc). Now the idea of setting up the shop in the Town Square Shopping Centre was to sell souvenirs etc, but one old lady upon seeing all the drinks on the counter slapped down 50p and asked for "two cokes please"!
- ..... **DID YOU HEAR ABOUT?**  
The first coach breakdown of the season (it didn't take long) on route to the Blackburn game. One of the supporters buses started billowing smoke and finally game up the ghost — supporters had to be crammed on to the other coaches as no replacement could be found for reasons which were given in the last match programme.
- ..... **BRIAN MARWOOD** — Arsenal's impressive winger, who was asked to give his verdict on all the 1st division teams' chances this season. Well when it came to Manchester United he said "if they had a weakness it's in defence". Well I don't suppose he can get it right everytime, but I wonder what his opinion on his own defence is after the 4-1 thrashing they received . . .
- ..... **MATCH** magazines predictions for 89/90 season . . . Well Paul Stratton their football expert predicts Spurs to be 1st Division Champions, Leeds to go up from the second division with Latics finishing 19th, and Rochdale to go out of the Football League. — Somehow we don't think he knows a right lot about Soccer up north, so here's our predictions — 1st Division Liverpool, 2nd Division Latics, 3rd Division Bury, 4th Division Rochdale. — Stupid?? Well they started it!!!

### OLDHAM ATHLETIC ASSOCIATION FOOTBALL CLUB

Boundary Park, Oldham OL1 2PA

Telephone: 061 624 4972

Latics Clubcall — 0898 12 11 42

Commercial Department  
061 652 0966 — 061 627 1802

Physiotherapy Clinic  
061 678 0455

Community Programme  
061 678 8464

PRESIDENT: R. Schofield

CHAIRMAN: I. H. Stott

BOARD OF DIRECTORS:  
D. A. Brierley (Vice Chairman)  
R. Adams, G. T. Butterworth,  
P. Chadwick, N. Holden,  
J. C. Slevin, D. R. Taylor.

TEAM MANAGER: J. Royle

SECRETARY: J. T. Cole

COMMERCIAL MANAGER: A. Hardy

COACHING STAFF:

W. Donachie, W. Urmson.

CHIEF SCOUT: J. Cassell

YOUTH DEVELOPMENT OFFICER:

G. Hollinshead

PHYSIOTHERAPIST:

I. Liversedge, M.C.R.P., S.R.P.

HON. MEDICAL OFFICER:

J. W. Kelso

ASSISTANT MEDICAL OFFICER:

R. B. Hollos

ASSISTANT SECRETARY:

M. Blackburne

BLUE BOND CLUB MANAGER:

G. A. Lawton

COMMUNITY PROGRAMME

MANAGER: J. R. Platt

PROGRAMME EDITOR: A. Hardy

PROGRAMME COMPILATION:

G. Lawton & B. Pascal

FRONT COVER DESIGN:

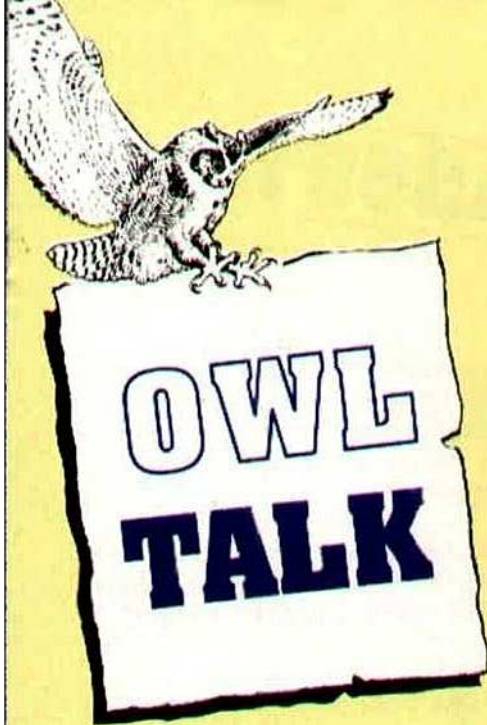
Stewart Beckett (C.A.S)

PRINTED BY:

Windmill Print & Design







# SUPPORTERS ASSOCIATION

## LAUNCH NIGHT

The new Supporters Association was launched on Thursday 3rd August with an enrolment night which involved a photo quiz, raffles and an impromptu question and answer session with Andy Rhodes and Andy Ritchie. Thanks also to the girls in the office who came along to make out membership cards on the night.

## PHOTO QUIZ

The Committee's thanks go to Gordon Lawton, Peter Windle who organised a tough quiz with photo's of Latics players from all era's. The prize of a bottle of wine was won by Geoff Smith, who had a tremendous 90% correct answers.

## FREE RAFFLE

Over 140 Supporters have joined the Association and those who joined on or before the launch night were entered into a free raffle. 1st prize was a Season Ticket, 2nd Prize an Autographed Football.

## PLAYERS IN ATTENDANCE

ANDY RITCHIE made his first appearance as Honorary President of the association, together with Vice President GARY HOOLICKIN, now sadly retired after tremendous service to the club. We hope they both enjoy their 'term of office'. Thanks also go to Andy Barlow, Andy Rhodes and Gary Williams for also coming along to help on the night.

The appearance of Andy Rhodes and Andy Ritchie on stage to answer fans questions began slowly with a shy crowd! It soon livened up though with Rhodes' Elvis impression, and Ritchie letting us into the secrets of his hairdresser!

## MEMBERSHIP

Membership is open to anybody over the age of 16. Application Forms can be obtained from the Latique shop. The Membership fee is £3, which gives Membership until 31st December 1990. Applications must be accompanied by two passport size photographs. So if you support the Latics and haven't enrolled in the Supporters Association yet, collect your form and make yourself a member.

## LATICS TREASURE CHEST

At each meeting a raffle will be held to win a key. One of the keys will open the treasure chest which will contain 50% of all takings. If the key does not open the treasure chest the winner will receive a consolation prize of £5 and the contents of the treasure chest will carry forward to the next meeting. £55 plus 50% of the nights takings will be on offer at the next meeting.

## SUPPORTERS ASSOCIATION FOOTBALL TEAM

The Supporters Association Football team are currently trying to recruit a goalkeeper. Supporters club games involve travelling long distances and at unearthly hours, but those involved all believe it is worthwhile.

Anyone interested should contact Paul Dixon on 633 3687 as soon as possible.

## NEXT MEETING

The next meeting of the Association will be held at the Clayton Arms on Monday 18th September, 1989. Entry will be £1 which will include the price of a potato pie supper. Regular events such as the Latics Treasure Chest will be supplemented by a general knowledge quiz.





# **Bovis Urban Renewal**

**PARTNERS IN PROGRESS**

*with*

*Oldham Borough Council*

*and*

*Oldham Economic*

*Development Association*



**Bovis Urban Renewal Limited**  
**4 Carlton Gardens London SW1Y 5AB**  
**01-839 5611**



## PROFILE ON RICKY HOLDEN

New signing Rick started his career with Burnley, but only made one appearance for them back in 1985/86 season. Having been given a free transfer Halifax Town snapped him up and he stayed with the Shaymen until midway through 87/88 season when he joined last Tuesday's visitors to Boundary Park, Watford, in a deal worth £150,000 to the Yorkshire club. Whilst with Halifax he made 67 league appearances scoring 12 goals.

The move to Watford was a successful one with him making 52 league appearances and netting 10 times from his left wing position. The £165,000 fee manager Joe Royle paid to Watford makes Ricky the second most expensive player over to play for Athletic.

25 year old Rick hales from Skipton on the Lancashire/Yorkshire border, standing at 5' 11" and weighing in at 12 stone 7 lbs, Manager Joe Royle feels that he is the ideal replacement for the now departed Tommy Wright.



Rick signs the forms watched by Joe Royle.

### COMMUNITY PROGRAMME

"Good afternoon everyone" on what is the first home Saturday fixture of the New League Season.

I would like to take this opportunity of wishing the 1st team every success for the coming campaign.

On the Community front, throughout the summer we have continued with various activities involving Senior Citizens Tea-Dances, Soccer Schools and visits to local community centres for coaching activities with local youngsters.

The community staff have had the opportunity of taking various courses to assist them in finding permanent Employment on leaving the scheme. These include the Swimming Bronze Medallion, Football Pre-lim, Keep-fit course for ladies and a volley ball level 1 certificate course.

Throughout the coming months we will continue with our Community work along with providing courses for the community staff in recreation and leisure.

If anyone would like further information about any of the above please contact me on the Community number 061 678 8464.

JOHN PLATT

### LATICS PLAYER WINS INTERNATIONAL HONOUR

Latics YTS boy Nicholas Everingham has brought home the first representative honour of the club's 1989/90 season. The former Hull schoolboy represented England at Under-16 level on Saturday 12th August as they defeated a Scandinavian Select XI 2-1 at Wembley Stadium to win the Vauxhall Challenge.

15-year old Nicholas, a promising left-back, has recently signed forms at Boundary Park. He is currently resident at the prestigious GM Vauxhall/FA National School which was established in 1984 to groom the country's most promising youngsters for a career in the professional game.

Nicholas' effort for the National Under-16 squad were rewarded in the previous week with another major trophy. The Latics defender formed part of the England squad which won the 1989 Vauxhall Nordic Cup – an international tournament involving Denmark, Finland, Iceland, Norway and Sweden. England were victorious winning three of their five games and heading the final table with seven points.

### BARCLAYS SIGN UP FOR THREE MORE YEARS

It was announced last week that Barclays Bank had agreed terms with The Football League for a three year extension to their sponsorship of the League Championship in a deal worth £7 million. With one more season of the original partnership still to run, this brings Barclays' investment in the game's premier competition to £11.55 million over six years – easily the biggest sponsorship in domestic sport.

Commenting at last week's launch, the League's Commercial Director, Trevor Phillips, said, "Naturally, we are delighted with this extension. The backing, support and confidence of Barclays is crucial to football as we move into a decade when the game has to confront some vital issues that will undoubtedly have a major long term impact upon the game."

### CHAMPION CLUBS CASH IN

The prize fund for the forthcoming Barclays League Championship has been increased to £240,000 from £200,000 last year. Indeed, for the first time, the League Champions will be rewarded with prize money reaching six figures.

The breakdown of the Barclays League prize structure for 1989/90 is as follows:-

|                |   |
|----------------|---|
| Division One   | – Champions £100,000<br>– Runners-up £20,000. |
| Division Two   | – Champions £45,000<br>– Runners-up £15,000.  |
| Division Three | – Champions £25,000<br>– Runners-up £5,000.   |
| Division Four  | – Champions £25,000<br>– Runners-up £5,000.   |



## LOOKERS CONTINUE SPONSORSHIP

LOOKERS PLC have agreed to extend their current 'Lookers Stand' sponsorship for a further two years. The deal worth £80,000 in cars to Latics was agreed between Commercial Manager Alan Hardy and Roger Davies of Lookers Oldham, along with Robin Lush of Lookers Wellington.

Lookers took over the Family Stand Sponsorship from The Martins Motor Group, when they took control of the Oldham car company in 1988.

Included as part of the sponsorship Lookers have supplied the club with a mini bus which will be used as transportation for the junior teams.



Latics Commercial Manager Alan Hardy accepts the new sponsorship deal from Lookers with Robin Lush (left) and Roger Davies (right).



Ashdene & Windsor Company secretary, Paul Taylor signs their three year agreement with Chairman Ian Stott.

## ASHDENE & WINDSOR TAKE OVER

The Third major sponsorship deal of the summer came when local construction company ASHDENE & WINDSOR, completed a three year, £30,000 deal to sponsor the main stand at Boundary Park.

Ashdene & Windsor directors Len Hindle and Geoff Woods have for a long time been staunch Latics fans, with seats in the now titled Ashdene and Windsor Stand.

All the directors, players and staff at Boundary Park would like to extend their sincere thanks to all three major sponsors for their generosity and support.



## IMPORTANT NOTICE FOR THE CHADDY END

As you know the terrible disaster at Hillsborough has meant that all clubs have to look even more closely at ground safety. In fact before the local council grant the renewal of our safety certificate they are looking very carefully at our arrangements for your safety.

One aspect of ensuring complete safety at the Chadderton Road End is that we must keep the 'white' painted gangways clear.

So we ask for your co-operation in helping our stewards to keep the gangways FREE.

I hope you will all have a most enjoyable season in a safe and congenial atmosphere.

## OLDHAM 10K

This years OLDHAM 10K which takes place on Sunday 17th September, has been sponsored by the Oldham Metropolitan Borough Council.

The OLDHAM 10K has become established as one of Britains Biggest and Best, so much so that it has been awarded a AAA 'Hot 100' ranking.

We are hoping to attract over 2,000 competitors many of them running to raise money for local charities. We are also hoping that lots of runners will enter into the spirit and run in fancy dress. Entry forms and sponsorship forms can be obtained from Latique (New Club Shop) or by post, enclosing a stamped addressed envelope. But hurry, entries close on Monday September 4th.

## WHOT NO TOKEN SHEET?

Supporters will no doubt have noticed the absence of the token sheet for the 1989/90 season, this will be included in the Plymouth Argyle match magazine.

As usual just affix the token from each match programme to the token sheet, and use as and when directed by the ticket office. (All ticket games, away cup ties etc).

As with last year there will be a special promotion for holders of full token sheets towards the end of the season - e.g. Special Price offers in the Latique Shop - So buy your programme every week and save your tokens.

## VIP FACILITIES

Anyone who would like to take advantage of the Executive facilities at the Victoria Ground when we visit Stoke City on 16th September should contact Mick Cullerton, Commercial Manager, on 0782 45840.

The Sir Stanley Matthews Suite Executive Restaurant package includes car parking, match programme, four course meal, seat in main stand and coffee and biscuits at half-time. The cost per person is £25.







# THE ROYLE REPORT



Tonight's visitors to Boundary Park complete a quick hat-trick of clubs who were the losers in last years play-offs. Swindon Town under Lou Macari, nearly delivered Division One, after being in the frame most of last season, but lost out to the eventual play-off winners, Crystal Palace. A change of manager in the summer has seen Ossie Ardiles take over the hot seat, and I'm sure that we all wish him every success, after tonight!

Unfortunately I cannot write about our first victory yet, a victory that I thought we deserved on Tuesday against Watford, but our old failings at set pieces saw a Watford player 'on his own' in our box to give them an equaliser. I felt that our performance overall was a vast improvement on our opening display at Blackburn, that was, at best, lack lustre. Having gone so well in pre-season, even with injuries, I felt that we would never have a better chance of breaking our Ewood Park jinx, but the Rovers must have been amazed at how easily they won, even with an under strength team, having not played particularly well themselves. We have talked about the game and looked at the video, but I must admit to still being puzzled as to how we played so badly. Let's hope it was a 'one off' and that we continue to improve on our Watford performance.

Jon Hallworth, Steve Bramwell and Andy Gayle were all due at the specialists this week, hoping to get the all clear to return to light training next week.

Our Assistant Secretary, Mark Blackburn leaves us this week to take up the post of Secretary at Wigan. Mark has been here for over five years and his presence will be sorely missed. Good Luck with your 'new Latics' Mark.

We desperately need three points today to offset our two results to date, so get behind the lads and cheer us on to victory. We'll see the travelling band in Geordie land next week.

**GOOD LUCK,**

**JOE.**

## TRANATAN LEISURE LIMITED

*Fast Tan Sunbed Hire*  
HAVE SUPPLIED OLDHAM  
ATHLETIC WITH A SAUNA TO  
KEEP THE PLAYERS IN SHAPE

TEL: 061-624-9558 or 061-368-0808





# TODAYS MATCH SPONSOR

*Where distance divides...*

At British Telecom we handle 70  
million calls a day. From the  
smallest village to the busiest city, we're there.



We bring together the busy,  
the lonely, the sad, the happy.

The young and the old.

We carry the news – both good  
and bad, momentous and trivial.



As a company we deal with



technology of staggering  
complexity. But what we do is  
essentially simple: Where

distance divides we bring people closer together.

*... we unite*

---

British  
**TELECOM**  
*It's you we answer to*

---



# **F.H.BROWN**

## **BUSINESS EQUIPMENT**

**Canon**

MAIN AGENT

**Castle Park Industrial Estate  
Bower Street  
Oldham OL1 3LN  
Tel: (624) 4411**

**Offices also at:**

**Burnley Tel: (0282) 26622**

**Blackpool Tel: (0253) 21492**

**Barnsley Tel: (0226) 204888**

***If you like wine  
you'll like Willoughbys***

**The Willoughbys Group of Fine Wine Companies  
Established 1850**

**Willoughbys Ltd**  
100 Broadway, Chadderton, Oldham OL9 0AA Tel: 061 620 1374  
53 Cross Street, Manchester, M2 4JP Tel: 061 834 6850  
1 Springfield House, Waier Lane, Wilmslow Tel: 0625 533068

**in association with**

**George Dutton & Son**  
Godstall Lane, St. Werburgh Street, Chester CH1 1LJ  
Tel: 0244 312488

**Thomas Baty & Sons Ltd**  
37/41 North John Street, Liverpool, L2 6SN  
Tel: 051 236 1601

**Lakeland Vintners**  
Longlands, Bowness-on-Windermere, Cumbria,  
Tel: 096 62 6321







# FOR THE RECORD

## DIVISION TWO ATTENDANCES/SCORERS 1988/89

|                  | Aggregate | Average | Leading league scorers   |
|------------------|-----------|---------|--------------------------|
| Barnsley         | -----     | -----   | Lowndes 1                |
| Blackburn        | 9,939     | 9,939   | Garner 1                 |
| Bournemouth      | -----     | -----   | Newson 1                 |
| Bradford City    | 10,242    | 10,242  | Jewell 1, Tinnion 1      |
| Brighton         | 9,865     | 9,865   | Blissett 1, Codner 1     |
| Hull City        | 8,158     | 8,158   | Payton 1                 |
| Ipswich          | 12,100    | 12,100  | Humes 1, Lowe 1, Woods 1 |
| Leeds            | -----     | -----   | Baird 1, Davison 1       |
| Leicester        | -----     | -----   | Clarke 1                 |
| Middlesbrough    | 21,727    | 21,727  | Slaven 2                 |
| Newcastle        | 24,482    | 24,482  | Quinn 4, Gallacher 1     |
| LATICS           | -----     | -----   |                          |
| Oxford           | -----     | -----   |                          |
| Plymouth         | 8,509     | 8,509   | Stuart 2                 |
| Portsmouth       | -----     | -----   |                          |
| Port Vale        | -----     | -----   | Beckford 1, Glover 1     |
| Sheffield United | -----     | -----   | Agana 2, Deane 1         |
| Stoke City       | 16,058    | 16,058  | Biggins 1                |
| Sunderland       | -----     | -----   | Gates 1, Hawke 1         |
| Swindon          | 10,199    | 10,199  |                          |
| Warford          | 10,154    | 10,154  | Wilkinson 1              |
| West Bromwich    | 14,907    | 14,907  |                          |
| West Ham         | -----     | -----   | Keen 1                   |
| Wolves           | -----     | -----   | Mutch 1, Thompson 1      |

(Up to and including last Saturday)

## APPEARANCES & GOALSCORERS SEASON 1989/90

| Name          | Apps      | Goals |
|---------------|-----------|-------|
| Neil ADAMS    | 2         | —     |
| Andy BARLOW   | 1         | —     |
| Earl BARRETT  | 2         | —     |
| Frank BUNN    | 2         | —     |
| Nick HENRY    | 1         | —     |
| Andy HOLDEN   | 2         | —     |
| Rick HOLDEN   | 2         | 1     |
| Denis IRWIN   | 2         | —     |
| Ian MARSHALL  | 1 (1 Sub) | —     |
| Mike MILLIGAN | 2         | —     |
| Roger PALMER  | 1 (1 Sub) | —     |
| Andy RHODES   | 2         | —     |
| Andy RITCHIE  | 2         | —     |

## PONTINS CENTRAL LEAGUE FIXTURES 1989/90 DIVISION ONE

|      |    |                   |   |
|------|----|-------------------|---|
| Aug  | 24 | NOTTINGHAM FOREST | H |
|      | 30 | Leicester City    | A |
| Sept | 9  | Manchester United | A |
|      | 12 | COVENTRY CITY     | H |
|      | 20 | Newcastle United  | A |
|      | 27 | NOTTS COUNTY      | H |
| Oct  | 3  | Everton           | A |
|      | 10 | LEICESTER CITY    | H |
|      | 18 | Sheffield United  | A |
|      | 24 | HULL CITY         | H |
|      | 30 | Aston Villa       | A |
| Nov  | 7  | Manchester City   | A |
|      | 14 | HUDDERSFIELD TOWN | H |
|      | 21 | BRADFORD CITY     | H |
|      | 28 | Liverpool         | A |
| Dec  | 6  | Leeds United      | A |
|      | 12 | BLACKBURN ROVERS  | H |
|      | 19 | Derby County      | A |
| Jan  | 2  | MANCHESTER UNITED | H |
|      | 17 | Nottingham Forest | A |
|      | 23 | NEWCASTLE UNITED  | H |
|      | 30 | Coventry City     | A |
| Feb  | 6  | Bradford City     | A |
|      | 13 | LIVERPOOL         | H |
|      | 20 | Notts County      | A |
|      | 27 | EVERTON           | H |
| Mar  | 13 | SHEFFIELD UNITED  | H |
|      | 21 | Hull City         | A |
|      | 27 | ASTON VILLA       | H |
| Apr  | 3  | LEEDS UNITED      | H |
|      | 11 | Blackburn Rovers  | A |
|      | 17 | DERBY COUNTY      | H |
|      | 24 | MANCHESTER CITY   | H |
| May  | 2  | Huddersfield Town | A |





*Follow the best  
blooming  
team to the top of  
the tree!*

## **NEWBANK GARDEN CENTRE**

Turf Lane, Royton,  
Oldham.



**START LIVING —  
START DANCING**

## **BILLINGTONS**

ASCROFT STREET · OLDHAM  
Tel: 061-624 1222/633 5958



Instruction given in  
MODERN, BALLROOM,  
LATIN AMERICAN  
& OLD TIME DANCING

Private Lessons  
by Appointment

**Room Available for  
Functions with Private Bar**

## **ANDY RHODES**

The best stadium you have ever played in, and the one you would most like to play at? (A) Goodison Park (B) Ibrox.

The best player you have ever seen that plays in your position? Gordon Banks.

Your worst moment on the football field? Letting the ball slip under me against City 14/1/89 Lost 0-1.

Your tip for the top, a player who in your opinion will make it all the way to international level. Denis Irwin — the classiest full back outside the 1st division.

Your 1, 2, 3 for this seasons second division. (1) Oldham Athletic (2) Port Vale (3) Hull City.

The team you expect to make the most improvement in the second division this season. Oldham Athletic.

Your tip to win the first division. Manchester City.

The funniest character that you have ever met in football. Gordon (Flash) Lawton.

Your best pal in football. You have no friends in this game, but if I had to pick one — Tony Philliskirk (Bolton).



**The best and worst dressed member amongst your team mates. (best) Ronnie Evans (worst) Roger Palmer.**

**Name the one person who has had the biggest influence on your game. Jim Barron, Goalkeeping Coach.**

**If there was one thing you could change in football what would it be? 4 steps rule.**

**Your opinion on the government proposed I.D. scheme. Bad idea/not much thought put into it.**

Height: 6'0".

Weight: 12 stone 1lb.

Birthplace: Doncaster.

Previous Clubs & Appearances:

Barnsley —

appearances 36.

Doncaster Rovers —

appearances 106.

Latics —

appearances 39 league, 6 cup.



## **PERSONAL OPINION**



### **PERSONAL FAVOURITES**

**Holiday Spot** — Rhodes.

**Newspaper** — Daily Express.

**TV Programme** - Only Fools & Horses.

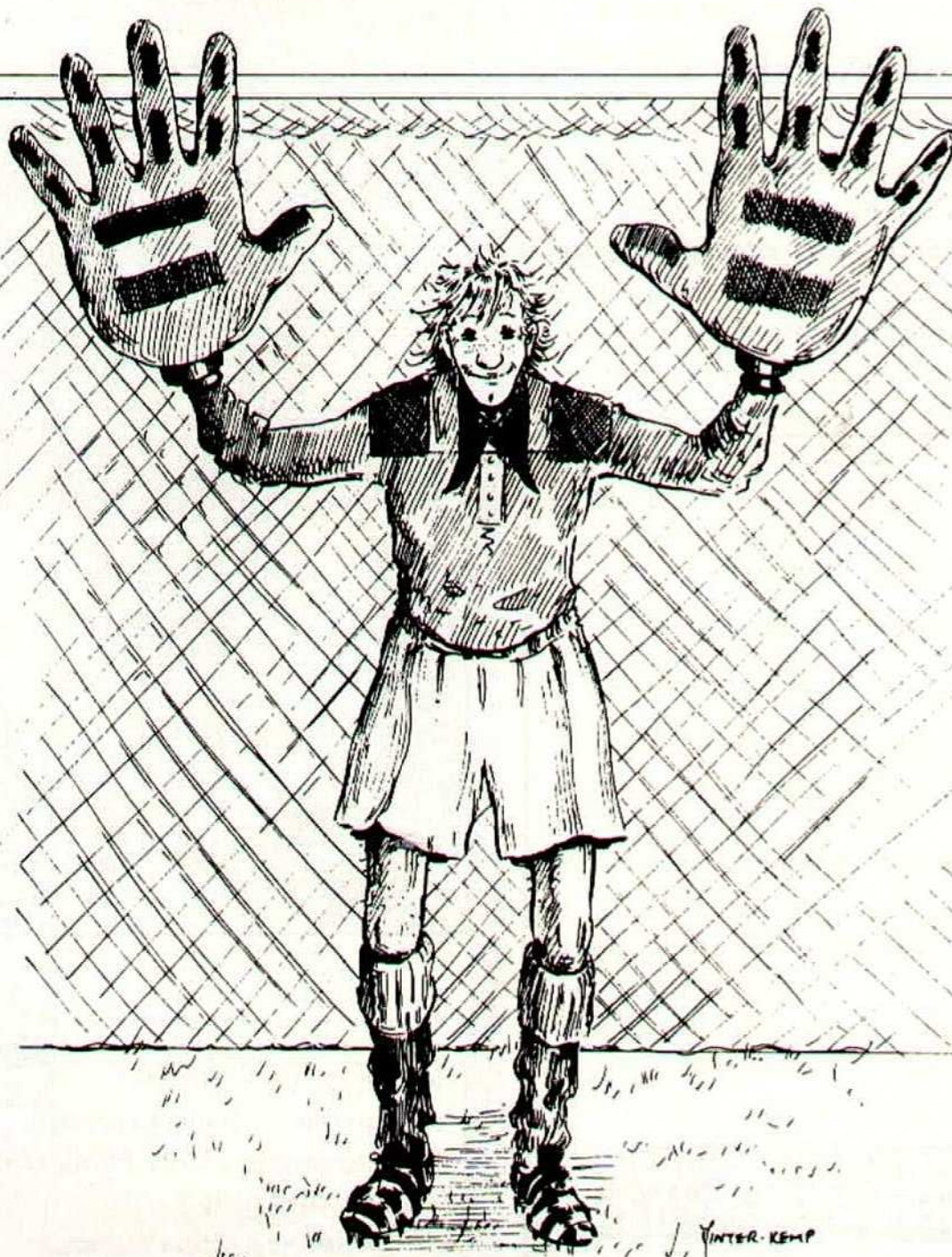
**Food** — Lots of it.

**Soft Drink** — Perrier Water.

**Cloths** — Designer.



Banking with TSB gives you  
a certain advantage.



The bank that likes to say YES.



## BRAZIL COME OUT OF DOLDRUMS

England is not the only country that has come through a bleak period. It doesn't seem so long ago that Brazil were kings of the world game. In fact, they have been struggling to maintain old standards but last month they came out of the doldrums to win their first trophy for 19 years!

When Brazil defeated Italy 4-1 in the 1970 final in Mexico, they recorded their third World Cup triumph in five tournaments. That earned them permanent possession of the old Jules Rimet trophy.

Since 1970, though, Brazil had not even managed to win the South American Championship until ending their barren spell this year. Brazil succeeded in almost intolerable conditions. The ten competing nations were split into two groups of five with each country having to play on alternate evenings during the early stages of the competition.

Brazil were kept apart from Argentina in the first phase — but they need not have worried. Argentina were a big disappointment, even with Diego Maradona in their side. Argentina managed to score only twice in four first-phase games — winning 1-0 against Chile and Uruguay. But goalless draws with Ecuador and Bolivia enabled them to top their group.

The top two teams from each group went into the final group. Uruguay managed to squeeze in behind Argentina, but only on goal difference over Chile and Ecuador.

Argentina were an even greater flop in the final matches. They lost 2-0 to Brazil, 0-2 to Uruguay and managed to save complete loss of face only by drawing their final match with Paraguay by 0-0.

So the Argentinians managed only two goals in seven games and did little to raise optimism over their chances of retaining the World Cup in Italy next year.

Maradona hinted that he may not be around when the finals come about. "This was not a happy time for us," he admitted. "I didn't enjoy it much at all, particularly losing to Uruguay. I saw my shot hit the bar and that destroyed me.

"I don't really know what the future holds for me. I don't wish to say anything."

Brazil had the advantage of starting with a good win, goals from Bebeto, Geovani (penalty) and Baltazar giving them a 3-1 success over Venezuela.

Brazil then fielded a defensive formation and were happy enough with a point from a goalless game with Peru.

Paraguay were the surprise team in Brazil's group. They won their opening three games with a goals record of 9-2. Their final group game was against Brazil.

A goal from Bebeto put Brazil in front shortly after the interval but the game remained in the balance until eight minutes from the end when the same player scored again to earn Brazil an important 2-0 victory.

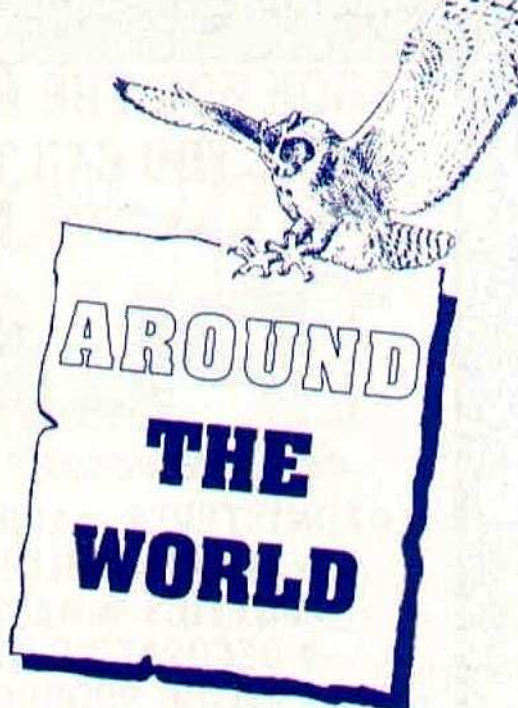
That enabled Brazil to draw level on points with Paraguay and, though they finished second on goal-difference, they went into the final phase.

Brazil's star forward was Bebeto who opened the scoring against Argentina with his fourth goal of the tournament. Romario added another to earn Brazil a 2-0 win.

Bebeto added two more in the next game against Paraguay. Romario also scored again in a 3-0 success.

The competition could scarcely have reached a more exciting climax. Both Brazil and Uruguay were level on top with four points, each with a goals record of 5-0, before they met.

A goal from Romario, shortly after the interval, settled that decisive game and gave Brazil their first trophy in 19 years.



**WITH  
TONY PULLEIN**





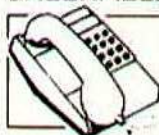
**LOOK FOR THE BRAND  
NAME YOU CAN TRUST**



*Big Range to choose from:-*

- ADMIXTURES • ADHESIVES
- SEALANTS • BITUMENS
- PUTTIES • MASTICS
- DECORATING AIDS
- TILING PRODUCTS

FOR FURTHER DETAILS, CONTACT:  
**PLAPRODUCTS (Chemicals) LTD.**  
GREENFIELD LANE, ROCHDALE OL11 2LD.



**HOTLINE (0706) 352255  
OR FAX (0706) 860880**

*Another  
Local Winner*



**Warburton's**  
*Family Bakers Since 1876*

WARBURTONS PENNINE LIMITED  
GLEBE STREET, SHAW, OLDHAM OL2 7SF  
TELEPHONE: SHAW (0706) 847744



**HOTEL**

*Smokies  
Park*

Public Bars  
Restaurants  
Conference Suites  
Meeting Rooms  
Night Club



Ashton Road, Bardsley,  
Oldham OL8 3HX

Telephone: 061-624 3405

Telex: 667490

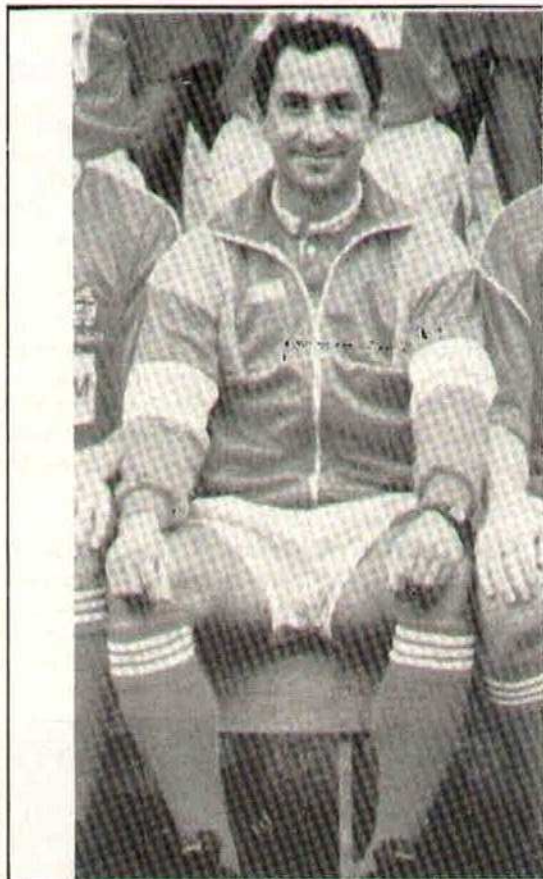
Fax: 061-627 5262



**-IN CHARGE-AT**

## **SWINDON TOWN**

### **OSSIE ARDILES**



Ossie Ardiles is currently experiencing his first taste of soccer management, following an apprenticeship period as coach to Q.P.R. last season. This summer he succeeded Lou Macari as manager of Swindon Town.

English fans will always remember him as the player who brought a new dimension to English football following his transfer to Tottenham in 1978. Ossie had just helped Argentina to win the World Cup Final and Spurs' manager Keith Burkinshaw pulled off a real coup when he persuaded him, and his colleague Ricky Villa, to sign for Spurs.

Ossie's ten-year spell with Spurs was broken only by a brief loan spell with Paris St Germain in 1982.

He was instrumental in helping Spurs to win the F.A. Cup in 1981 and the UEFA Cup three years later. His magical ball skills, and precision passing, became hallmarks of his game.

And who will ever forget those delightful radio interviews with Ossie bubbling away in his fractured English at such speed that ensured no one could ever understand a word he was saying!

Towards the end of his decade at White Hart Lane, Ossie spent a loan period with Blackburn Rovers.

In 1988 he was transferred to Q.P.R. where he played occasionally but where he was considered of greater value passing on his extensive knowledge to the young players. That experience prepared him for the time when he would become a manager in his own right.

That happened in the summer when Swindon invited him to join them.







# TODAY'S VISITORS

## ***POOR START BY SWINDON***

Following their wonderful achievement of last season, when they qualified for the promotion play-offs, Swindon made a poor start to the new season, losing 0-2 at home to Sunderland last Saturday. So new manager Ossie Ardiles will be looking for a considerable improvement at Boundary Park this afternoon.

Mr Ardiles, the former Argentinian international who spent ten outstanding seasons with Spurs, succeeded Lou Macari as manager this summer. Mr Macari, who had lifted the club from the Fourth Division to the brink of Division One, has now moved on to West Ham.

Only one of last season's successful team, midfielder Charlie Henry (now Aldershot), left during the summer. One new face to join the squad belongs to Republic of Ireland international winger Tony Galvin. Striker Alan Biley, who includes Derby and Everton among his many clubs, has been signed for a trial period.

It was here at Boundary Park that Swindon played their final League match of last season. They had already qualified for the play-offs but they ended with a 2-2 draw.

Sadly, their bid for First Division glory ended in the semi-final of the play-offs when they were beaten 1-2 on aggregate by Crystal Palace.

The Swindon side will probably be selected from:

**FRASER DIGBY** (Goalkeeper) Fraser played for the England youth side during his apprenticeship days with Manchester United. He did not play in United's first-team but made his debut soon after moving to Swindon in 1986. He then won four England under-21 caps.

**TIM PARKIN** (Defender) Tim spent four years as a Blackburn professional but played only around a dozen senior games. He then joined Malmö, the Swedish club, but returned to England with Bristol Rovers in 1981. He enjoyed five years as a regular member of their side before moving on to Swindon in 1986.

**DAVID HOCKADAY** (Defender/Midfield) David emerged as a League footballer with Blackpool in 1977. He played more than 150 senior games for the Tangerines before transferring to Swindon in 1983. He celebrated his 200th League game for Swindon last season.



*Back row (left to right):* Phil King, Dave Hockaday, John Cornwell, Duncan Shearer, Fraser Digby, Nicky Hammond, Tim Parkin, Adrian Viveash, Steve White, Tony Galvin.

*Middle row:* Chic Bates (Assistant Manager), John Trollope (Youth Team Manager), Tom Jones, Ross MacLaren, Jon Gittens, Neil Tomlinson, Leigh Barnard, Andy Rowland (Coach), Kevin Morris (Physiotherapist).

*Front row:* Paul Hunt, Steve Foley, Mark Jones, Colin Calderwood (Captain), Ossie Ardiles (Manager), Alan McLoughlin, Paul Bodin, Fitzroy Simpson, Nicky Summerbee.



# SWINDON TOWN



**ROSS MacLAREN** (Defender) Ross was a reserve player with Glasgow Rangers but he established himself in League soccer after joining Shrewsbury in 1980. Derby signed him for £67,500 in 1985 and Swindon paid £150,000 for him three years later.

**JON GITTENS** (Defender) Southampton spotted Jon playing for Paget Rangers and he made his First Division debut for the Saints in 1986. Swindon signed him for £40,000 in 1987.

**PHIL KING** (Defender) Phil completed his apprenticeship with Exeter City and made 27 League appearances for the Grecians before moving on to neighbouring Torquay in 1986. His stay at Plainmoor was brief and he was soon playing for Swindon.

**PAUL BODIN** (Defender) Paul didn't initially make the League teams with his first two clubs, Chelsea and Newport, but got his chance in 1982 after linking with Cardiff. He spent three seasons at Ninian Park, then went non-League with Bath City. He returned to Newport in 1987 but, after a few weeks, he was transferred to Swindon.

**FITZROY SIMPSON** (Midfield) Fitzroy joined Swindon as a trainee and he got his chance in their League team last season.

**ALAN McLOUGHLIN** (Midfield) Alan was an apprentice with Manchester United but it was after he had moved on to Swindon in 1986 that he made his debut in League football. He also spent a loan period with Torquay before earning himself a regular place in the Swindon side.

**STEVE FOLEY** (Midfield) Steve joined Liverpool as a junior but he did not play first-team football with the Reds. Fulham gave him his chance in 1984, when he was on loan to them. Later that year he was transferred to Grimsby and in 1985 he became a Sheffield United player. Swindon signed him in 1987 and he scored 10 goals last season.

**JOHN CORNWELL** (Midfield) John developed in the junior sides at Leyton Orient, graduating to first-team duty in 1982. He made well over 200 senior appearances for the O's before joining Newcastle for £50,000 in 1987. Swindon signed him last season.

**COLIN CALDERWOOD** (Midfield/Defender) Versatile Colin has played in several positions. He started as a defender in his Mansfield days but, since his transfer to Swindon in 1985, he has often filled a midfield role.

**TOM JONES** (Midfield) Tom joined Swindon from Aberdeen last season. He was previously in non-League soccer with Weymouth, moving to Aberdeen in 1987.

**TONY GALVIN** (Midfield) Tony was signed from Sheffield Wednesday this summer. A Republic of Ireland international on 25 occasions, Tony was renowned for his left-wing runs at Tottenham. He played more than 200 League games for Spurs before moving to Sheffield Wednesday for £140,000 two seasons ago. He remained at Hillsborough until his latest move.

**DUNCAN SHEARER** (Forward) Duncan was signed from Huddersfield for £250,000 in 1988 and last season he was Swindon's leading scorer with 16 goals. He began his career with Chelsea, where first-team opportunities were rare, but after transferring to Huddersfield in 1986 he quickly established himself as a goalscorer, leading the club's list in his two seasons with 25 and 16.

**ALAN BILEY** (Forward) Alan has been signed for a trial period following a spell in Greece. Once a junior at Luton, he went to Cambridge where he was three times top scorer. Derby signed him for £450,000 in 1980 but he made another big-money move to Everton a year later. He later played for Stoke (loan), Portsmouth, Brighton and New York Express before returning to Cambridge on loan, prior to his trip to Greece.

## LATICS V SWINDON

### Previous League Meetings:

|         | Home | Away |
|---------|------|------|
| 1965/66 | 1-1  | 1-0  |
| 1966/67 | 1-0  | 3-6  |
| 1967/68 | 0-2  | 0-0  |
| 1968/69 | 2-3  | 1-5  |
| 1987/88 | 4-3  | 0-2  |
| 1988/89 | 2-2  | 2-2  |





## Our fleet at your disposal...

Your local Cleanaway fleet can handle all types of industrial and commercial, dry and wet waste — quickly and efficiently.



### CLEANAWAY LIMITED

**Manchester Service Centre**  
1001 CHESTER ROAD  
STRET FORD, MANCHESTER M32 0RA  
Tel: 061 865 4254/5

**Makes the least of waste**



**we've got the  
action**



**Photos,  
match reports and  
latest news on Athletic**

**every night in the**

**EVENING  
CHRONICLE**

# STAR VISITOR

## STEVE WHITE



Steve White has now scored well over 100 goals in League soccer and last season he was Swindon's second-highest scorer with 14 goals. It's a fair bet that he will get well into double figures again this term.

He first hit the headlines when he was thrust into Bristol Rovers' senior side in 1978, scoring four times in only eight games. The following season he was Rovers' joint-top scorer with 13 goals and that interested several bigger clubs.

Steve was valued at £175,000 when Luton signed him the following season. In October 1981 he scored four in one game against Grimsby and finished second-highest scorer with 19 goals.

At the end of that season, Steve was transferred to Charlton. Though he scored 12 times the following season, he was transferred back to Bristol Rovers at the end of it.

For a while Steve went off the boil but in 1985/86 he was back on song with 15 goals and Swindon, in search of a striker, persuaded him to join them.

Since then Steve has hit double figures every season, with a 15-goal hit in 1986/87, followed by 14 the next season plus another 14 last term.



# COMING SOON

**PLYMOUTH ARGYLE**  
**SATURDAY 9th SEPTEMBER**  
**KICK-OFF 3pm.**



Plymouth got off to their first winning start in seven years when they defeated a disappointing Oxford side 2-0 at Home Park last Saturday. Both their goals came from Mark Stuart, the forward signed from Charlton last season.

One of Argyle's best players last weekend was Andy Thomas, the midfielder signed from Bradford City for £80,000 in the summer. A former striker, he has the ability to score goals.

The Argyle team is currently being rebuilt by manager Ken Brown, the man who lifted Norwich City to the top of the tree. He was sensationally sacked by Norwich almost two years ago but is currently going through the same process at Plymouth.

Since taking over in the summer of 1983, Mr Brown has signed strikers Sean McCarthy — a high scorer with Swansea — and Greg Campbell (from Sparta Rotterdam). Another key signing was midfielder David Byrne (from Millwall). He also signed his son, full-back Kenny Brown, from his former club Norwich.

Another important summer signing saw Arsenal's Wales under-21 international goalkeeper Rhys Wilmot join the club in a £100,000 deal. Wilmot shone when he played on loan for Argyle last season.

Mr Brown has been quietly creating a very good side. One of his key men remains that goalscoring machine Tommy Tynan. He has been top scorer in each of his five seasons with the club, hitting 26 last term. During his career, Tynan has scored 266 goals in all competitions. Uncharacteristically, he missed a sitter last Saturday but we can expect to see him gliding them home again before long.

Then, who knows? Maybe Plymouth could emerge as surprise promotion candidates?

We shall be able to make our own judgments when they come to Boundary Park on Saturday September 9th.

## COGGON COMPUTERS (SYSTEMS) LTD

145 Bellhouse Road,  
Sheffield

---

*Suppliers of the membership  
system to Oldham Athletic,  
wish the 'Latics' well  
for the new season*

---

**Telephone: (0742) 436551**

---

**THE ADMIRAL SUITE**  
**(At NORMAN LEISURE)**  
**GRAINS ROAD**  
**SHAW**  
**0706 841460**

---

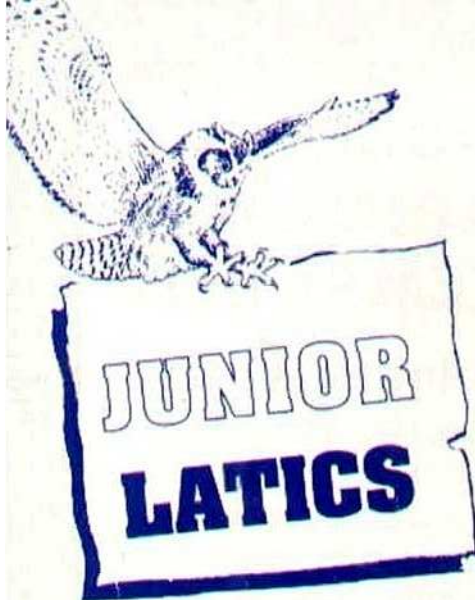
*NOW AVAILABLE FOR PRIVATE HIRE*

**ANNIVERSARIES — BANQUETS**  
**BIRTHDAY PARTIES — CHRISTENINGS**  
**DINNERS — WEDDINGS**

*CONTACT LORRAINE MURRAY BETWEEN  
10am-6pm FOR FULL DETAILS*

*CATERING BY LORDS OF WHITWORTH*





## AWAY TRIP TO STOKE CITY

Our first away trip of the season is to Stoke City on Saturday 16th September. The coach will leave the car park at the side of the Clayton Arms at 10.15am and on arrival at the Victoria Ground some of the members will be playing football against the Junior Potters, whilst the rest of the party cheer them on. The cost of the trip including Coach Fare, and a seat ticket in Stoke City's Family Stand, will be £3.50 members and £5.00 parents. Bookings can be made in the Junior Latics Lounge on Match Days, the Club Shop or by post, but please book early to avoid disappointment.

## FIRST MEETING

The first Junior Latics Meeting of the season is on Thursday 14th September at 7pm in the Royton Assembly Hall. There will be the usual games and quizzes, plus the mascot draw for the games against Barnsley,

Middlesbrough, Bradford City and Sunderland. Neil Adams, Nick Henry, Andy Holden and Andy Rhodes will be coming along to join in the fun, so make a note in your diaries of Thursday September 14th. New members are most welcome to come along and join.



Today's mascot Paul Blake

## MATCH MASCOT

Today's Match Mascot is 8 year old PAUL BLAKE of 10 Turfton Road, Royton. Paul attends High Barn Junior School, Royton, and his hobbies include football, swimming and Ju-jitsu. His favourite player is Roger Palmer. Hope you enjoy your day Paul.

## HAPPY BIRTHDAY

Happy Birthday to the following members who celebrate their birthdays in the next two weeks. Matthew Lowe and Timothy Cook (August 27th), Amy Best (August 29th), Philip Hull (August 30th), Christopher Branagan (Sept 1st), Gavin Heap (Sept 2nd), Gary Hickey and Stephen Varley (Sept 3rd), Chris Howard (Sept 4th), Ian Sutcliffe (Sept 5th), Steven Widdall and Anthony Taylor (Sept 6th), Andrew Boothby (Sept 7th) and David Brierley, Paul Baker and Nicola Dibrow (Sept 8th).



Andrew Wilkinson meets his favourite player Andy Ritchie.

# RESERVES & YOUTHS

**Lancashire League Division 2**  
**Saturday 19th August 1989**

## OLDHAM ATHLETIC 7 MARINE RESERVES 0

Athletics' new crop of youngsters kicked off the season in fine style with an overwhelming victory over lackluster Marine. Only the young Marine goalkeeper came out of the game with any credit, infact without some brilliant saves the score could very easily have been double. As it was both Matthew Pye and Steve Raynor netted twice with other goals from Tony Barlow, Paul Bernard and a Rob Miller penalty making the final score 7-0. Man of the match was hard to pick with so many having good games. But the final choice went to centre half Rob Miller, but one to watch is definately going to be Adam Vigo who came on as substitute for the last 20 minutes.

Team: Wall, Bamber, Bradshaw, Miller, Hall, Barlow T, Makin, Bernard, Pye, Raynor, Bennett, Subs, Halstead, Vigon.

Goalscorers: Pye 2, Raynor 2, Barlow T, Bernard, Miller.

### Next Home Game

Lancashire League Division 2

Saturday September 2nd

WIGAN ATHLETIC — Kick off 11.00am

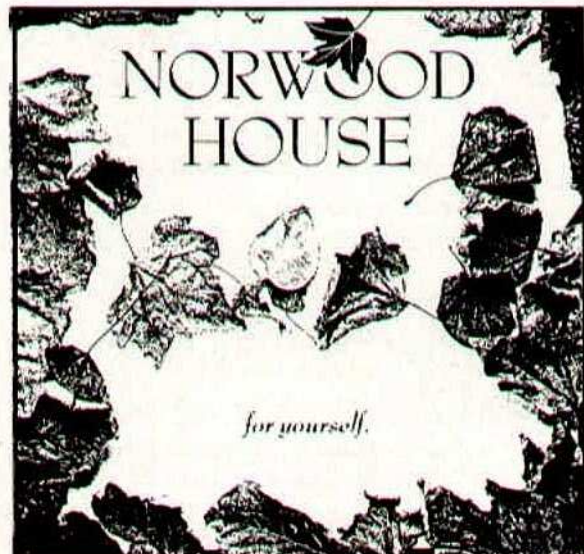
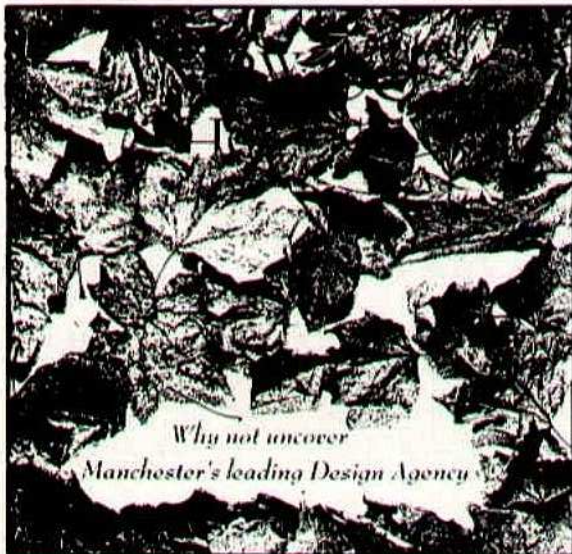
Pontins League Division 1

Tuesday September 12th

COVENTRY CITY — Kick off 7pm

**JUNIOR LATICS SPONSORED BY BARCLAYS BANK LOCAL BRANCHES**






---

*Danes Road Fallowfield Manchester, M14 5LB*  
*Telephone 061-225 7729 Facsimile 061-225 0384*

---

# **NORMAN LEISURE**



## **SNOOKER SPORT**

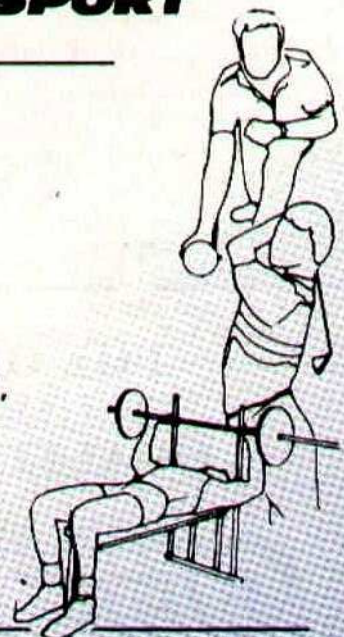



---

**14 SNOOKER TABLES, GAMES ROOM,  
BAR FOOD SERVED DAILY,  
LARGE BAR LOUNGE.**

---

**5 BADMINTON COURTS, GYMNASIUM,  
SAUNA — SUNBEDS, LADIES AEROBICS,  
KARATE — FOOTBALL, TABLE TENNIS,  
INDOOR BOWLS, SATELLITE T.V.,  
— BAR FOOD SERVED DAILY —  
BAR — LOUNGE**




---

**Hold your Company or Club Snooker Competitions at Norman Leisure — Buffets available,  
GRAINS ROAD, SHAW, OLDHAM. Tel: Shaw (0706) 841460**

---



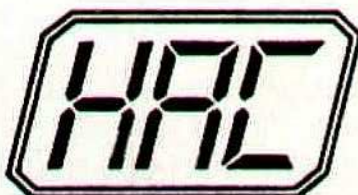
# **"WELL I NEVER!"**

## **20 FACTS YOU MAY NOT KNOW ABOUT SWINDON**



1. Swindon are unbeaten in their last four away games in the Second Division — at Birmingham (2-1), Brighton (2-0), Walsall (2-2) and Oldham (2).
2. The last Swindon player to score a hat-trick was Jimmy Quinn who hit threes against both Bristol City and Portsmouth in the Littlewoods Cup two seasons ago.
3. The last Swindon man to get three in a League game was Steve White who scored all the goals in a 3-1 win over Mansfield in April 1987.
4. Harry Morris scored five goals in a League game on two occasions for Swindon, against Q.P.R. in 1927 and Norwich in 1930.
5. Keith East equalled that club record when he scored five times against Mansfield in 1965.
6. Harry Morris also holds the club record for most goals in a season. He netted 47 in the League and one in the F.A. Cup in 1926/27.
7. A third club scoring record belonging to Morris is the aggregate of 230 in League and Cup between 1926 and 1933.
8. John Trollope created a League record by appearing in 756 League games for Swindon. No other player has made as many appearances for one club.
9. Trollope was also the oldest player to appear in the Swindon first-team, being 37 years and 119 days old when he made his final appearance in 1980.
10. Paul Rideout was Swindon's youngest player. He was 16 years and 107 days of age when he made his debut in 1980.
11. Swindon were one of only two Third Division clubs to win the League Cup (now the Littlewoods Cup). They defeated Arsenal 3-1 in the 1969 final.
12. Swindon's biggest League win was by 9-1 against Luton in the Third Division (South) in 1921.
13. Their club record win was by 10-1 against Farnham United in the F.A. Cup in 1925.
14. Swindon have only on one occasion conceded 10 goals in a game, when losing 1-10 to Manchester City in the F.A. Cup in 1930.
15. That was equalled when they went down 0-9 to Torquay in a Third Division (South) game in 1952.
16. Swindon were elected to the League in 1920 when they became a founder member of the Third Division (South).
17. Their best achievement in League soccer was in finishing fifth in Division Two in 1970.
18. Swindon achieved an all-time League record when they collected 102 points in the Fourth Division in 1985/86.
19. The record attendance at the County Ground was 32,000 for an F.A. Cup tie against Arsenal in 1972.
20. Their best crowd last season was 18,677 for the visit of West Ham in the fourth round of the F.A. Cup.

### **THE ORIGINAL SMALL TAXI METERS AND QUALITY TWO-WAY RADIO EQUIPMENT**



**"PURCHASE - TERMS - LEASING"**

For a free leaflet and quote ring - 061-626 9396  
(AGENTS THROUGHOUT THE UK).





## AWAY TRAVEL

Bookings are now being taken in the Latique Shop for the following Away Games

### NEWCASTLE UNITED v ATHLETIC

Saturday 2nd September, 1989 — K.O. 3 pm  
Depart Boundary Park 11am — Fare: £5.25

### STOKE CITY v ATHLETIC

Saturday 16th September, 1989 — K.O. 3pm  
Depart Boundary Park 12.45pm  
— Fare: £3.50

### ADMISSION PRICES

#### NEWCASTLE UNITED

Seats — East Stand, Leazes Wing, £7.50 (no concessions).

Standing — £4.00 (no concessions).

Programme: 75p on sale inside and outside the ground.

#### STOKE CITY

Seats — Butler Street Stand £7.00 (no concessions).

Standing — £4.00 (no concessions).

Programme: 80p on sale inside and outside the ground.

### GOING BY CAR TO NEWCASTLE UNITED:

M62 EAST to Junction 30. Then take the A642 North. at Roundabout A642/A639 North. At Roundabout A639/A642 take A642 East.

Interchange A642/A1 take A1 North.

Junction A1M/A69 take A69 North West.

Interchange A69/A6127 take A6127 North.

A6127/A186 : take A186 South West to Newcastle. Travel along Mosley Street. Turn right onto Cloth Market, continue along Newgate Street, turn left onto Leazes Park Road, turn left onto Strawberry Place.

NEWCASTLE UNITED FOOTBALL CLUB on right.

### GOING BY CAR TO STOKE CITY

#### OLDHAM

A627 (M) M62 (west follow 'Liverpool' signs) to Croft, junction with M6. (alternative shorter route:

A62 to Manchester then A5103 Princess Road/Parkway to M56 then M56 to Bowdon junction with A556 and A556 to M6 at Tabley).

M6 south to intersection 15, junction with A5006, A5006 to Stoke-on-Trent. Leave M6 at junction 15, and follow Stoke signs on A5006 to first roundabout for approximately 3/4 mile. Go straight on at roundabout into Queensway (A500) and carry on to the first junction (Campbell Road). Turn left at 'T' junction and go right at roundabout. Continue along Campbell Road for approximately 1/2 mile to Victoria Ground on your right.



Timber Wallboard and Ironmongery  
Scottfield, Ashton Road, Oldham

TIMBER AND WALLBOARD 061-627 2020  
BUILDERS MERCHANTS 061-626 4345

READY MIXED CONCRETE  
SALE Glebelands Road  
Tel: 061-969 7543

BOLTON Millfield Road, Brightmet  
Tel: Bolton 384867

OPEN: Mon. to Fri. 8.00 a.m. to 5.00 p.m.  
Sat. 8.00 a.m. to 4.00 p.m.



## NO STRINGS

Like all authorised Independent Financial Advisors, we have no axe to grind. The products we recommend are those that are best for you, not the company that sells them. For Pensions, Life Insurance or Unit Trusts, contact us

**COURTLETS  
INSURANCE BROKERS LTD.**

5 QUEEN STREET  
OLDHAM

Telephone: 061-624 6063





# SPONSOR KIT

LATICS SPONSORKIT SEASON 1989/90  
 BOOTS £30 SOCKS £20 SHORTS £25 SHIRTS £35  
 TRACK SUIT £40 FULL KIT £135

|   |  |  |  |   |   |
|---|--|--|--|---|---|
|                          | <b>EARL BARRETT</b><br>Full Kit –<br>Ken Fisher Textiles                                 |                   | <b>NEIL ADAMS</b><br>Full Kit –<br>Tile Trend<br>Stewart Dunkerley                               |                              | <b>NICK HENRY</b><br>Boots –<br>Amy Best aged 4<br>Socks –<br>The Gurr Family<br>Shorts – Wendy Dyer<br>& Susan Haslop<br>Shirt –<br>T/Suit |
| <b>PAUL WARHURST</b><br>Socks –<br>Synchrosound<br>Records<br>Shirts –<br>Boots –<br>Shorts –<br>T/Suit – |         | <b>WILLIE DONACHIE</b><br>Socks –<br>Rosemary & John<br>Boots –<br>Shorts –<br>Shirt –<br>T/Suit – |                | <b>SCOTT MCGARVEY</b><br>Shirt – Duncan Hall<br>Socks, Boots, Shorts<br>& T/Suit –<br>Heather, Jimmy<br>& Mick. |    |
|                         | <b>ANDY RHODES</b><br>Full Kit –<br>Trevor Hall –<br>Isle of Wight                       |                  | <b>DENIS IRWIN</b><br>Boots – Rodney,<br>Socks, Shorts,<br>Shirt, T/Suit –<br>Junior Latics Club |                             | <b>MIKE MILLIGAN</b><br>Shirt – T. Kerr & Co.<br>Boots –<br>Socks –<br>Shorts –<br>T/Suit –   |
| <b>ANDY RITCHIE</b><br>Full Kit –<br>Cordelia Ellidge   |       | <b>FRANK BUNN</b><br>Full Kit<br>Mr E. Grove   |              | <b>GARY WILLIAMS</b><br>Full Kit –<br>Ian Riley Joiner &<br>Builders<br>620 8359 & 624 6252                     |    |
|                        | <b>ANDY BARLOW</b><br>Boots – Mr B. Cocker<br>Socks –<br>Shorts –<br>Shirt –<br>T/Suit – |                 | <b>ANDY HOLDÉN</b><br>Full Kit –<br>Davis, Hope &<br>Furniss, Solicitors.                        |                            | <b>ROGER PALMER</b><br>Full Kit –<br>Mr G. Andrew   |
| <b>IAN MARSHALL</b><br>Full Kit –<br>Miss G. Byrne  |       | <b>JON HALLWORTH</b><br>Full Kit –<br>Oldham Athletic<br>Supporters in<br>the south.               |              | <b>RICK HOLDÉN</b><br>Socks, Shorts, Shirt &<br>T/Suit – Caldmat<br>Management Ltd<br>Boots –                   |    |

**Our Sincere thanks to all our sponsors.**





## The symbol of excellence.

The symbol that supports our  
technological excellence  
from computer systems to communications,  
satellites to simulators,  
radar to research  
on land and sea, in air or space  
also supports  
Oldham Athletic.

Ferranti International Signal plc, Bridge House, Gatley, Cheshire, SK8 4HZ

**FERRANTI  
INTERNATIONAL**

**MOVE ON UP TO NOVA  
FOR JUST  
£99 DOWN 15.2% APR**

Offer period  
July 1st to  
September 30th

With special finance deals available on all Nova it's hard to know which one to choose. And there are two special models as well. There's the Nova Pearl, an elegant four-door saloon with all of the small-car virtues of Nova plus plenty of big-car luxury features. Or the Nova Star, stylish three-door hatch that's packed with personality and features. And it's price is so attractive that there's sure to be a rush, so hurry round now to make sure of yours.



AVAILABLE AT



**Lookers Wellington**

**HUDDERSFIELD ROAD, OLDHAM**

**TEL: 061-633 1331**



## CLOSED CIRCUIT TELEVISION



*The first televised football match, 1937*

Now every Football League ground is equipped with television cameras.

The Football Trust has installed Closed Circuit Television systems at more than 110 British grounds. The cameras have a range of 150 metres and immediate close-up prints can be produced. Within minutes of an incident offenders can be identified and arrested with film made available as evidence in court. CCTV is the most effective anti-hooligan measure inside football grounds and the programme has been extended to include portable systems.

CCTV is only one of The Football Trust's many initiatives. Each year it receives over £9.5 million from the Spotting-the-Ball competition run by Littlewoods, Vernons and Zettors and spends it on projects that benefit all levels of the game throughout the United Kingdom.

# RYDER & DUTTON

ESTATE AGENTS  
VALUERS AND SURVEYORS

11/15 UNION STREET  
OLDHAM OL1 1HA  
TELEPHONE: 061-652 1231

## SOLID ALARM CO

*FIRST FOR BURGLAR ALARMS IN  
OLDHAM*

*Tel: 681-1909*



# KENYON PAINTS

INDUSTRIAL PAINTS & ADHESIVES

SUPPLIERS OF:  
INDUSTRIAL PROTECTIVE  
COATINGS AND ADHESIVES .  
DECORATIVE COATINGS AND VARNISHES

SALES COUNTER OPENING TIMES:  
MON-FRI 8.30am - 5.00pm  
SAT 8.30am - 12 NOON

KENYON PAINTS & ADHESIVES,  
REGENT STREET, OLDHAM.  
TEL: 061-633 6328  
FAX: 061-627 5072

## The PARK CAKE - BAKERIES -

The Park Cake Bakeries Limited  
Ashton Road, Oldham, Lancashire OL8 2ND  
Telephones 061-633 1181 & 652 5411 Telex 668738 Fax 061-626 6199

The Park Cake Bakeries Limited

*A Slice of Tradition*



# PROMOTIONS MARKETING COMMERCIAL

## ON VACATION?

New in at the LATIQUE SHOP are the very latest in 'T Shirt' design. 'Latics on Vacation' only £5.99. All sizes available, also now in stock are the '89/90 Latics on Tour' £5.99. Be the first to show your colours. Call in at the Latique Shop — and pick up a bargain!!

## LOTTERY AGENTS WANTED

If you are over 16 years of age and are looking for an easy way to earn extra pocket money, why not join our happy band of lottery agents. If you could sell 20 tickets a week to workmates, family or even in the pub — you would be doing you're 'bit' to help Latics to the first division. Tickets sellers are also wanted on match days. Telephone 652 0966 or call in at the shop for details.

## BLUE BAND CLUB

The Blue Bond Club continues to thrive, remember for only 50p per

week you receive 7 chances a day — 49 chances a week to win £100.

Every day 365 days a year we draw for a £100 prize and every week £52 weeks a year we pay out over 120 consolation prizes, over £55,000 a year up for grabs, for just 50p per week. Remember you can't win it if you're not in it!!! Ring Gordon on 627 1802 for more details.



## STARLINE

The Starline Scheme has lifted off tremendously thanks to the support of all true Latics fanatics.

The first draw is set to take place on September 23rd. Remember the more members the bigger the prize and the more money Joe receives in the Starline fund. For those of you who intend to join Starline, a special Starline desk has been set up in the Latique shop to collect and assist you in filling in the forms — but if you want to participate in the first draw the be quick!!!

## MISSING PANELS?

As everyone can see the panels which are supposed to surround the Scoreboard have gone missing — actually the panels were taken down to prevent 'wind damage' to the lighting equipment which will illuminate them. The three panels have been sold to Hotel Smokies Park, Lees Brewery and Clubcall who are part of British Telecom. When they are erected which will be for the Plymouth game the panels will be visible even to the over flying aircraft on route to Manchester Airport!!!

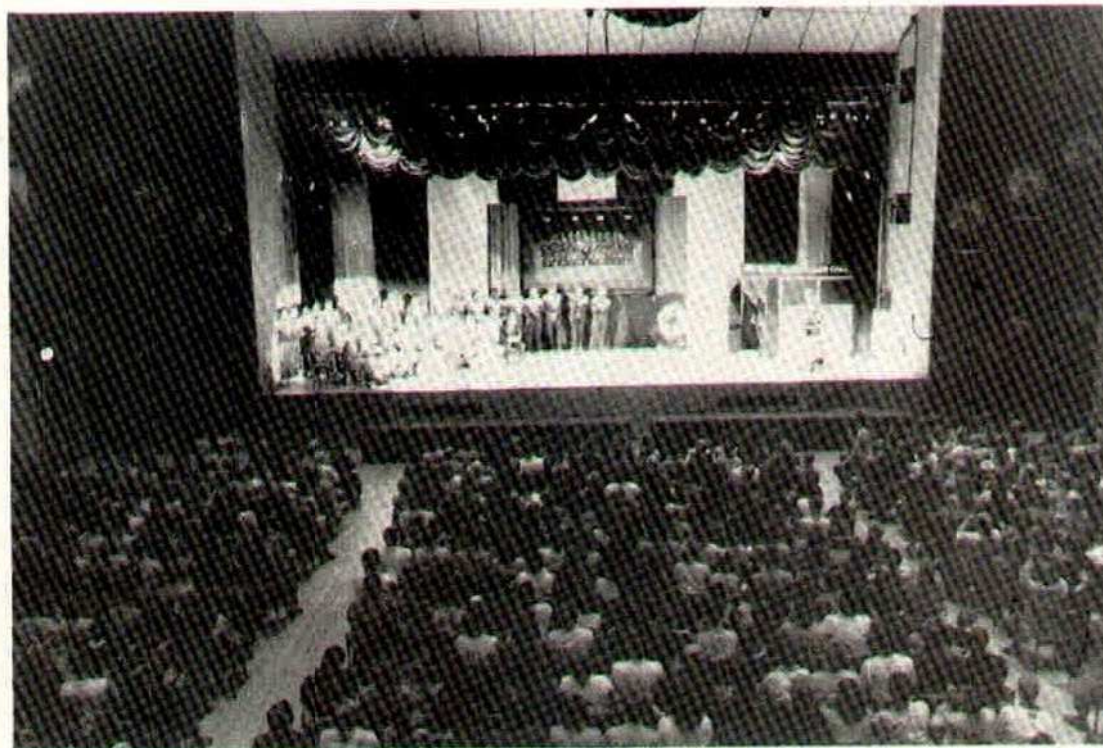




# FRAME FREEZE



*Chairman Ian Stott welcomes past players who were guests for the evening.*



*Once in the packed hall listen attentively to the presenter.*

*Photographs: Oldham Evening Chronicle*





*Fans queue up in the rain, over 1300 got into the hall, over 600 were unlucky.*



*After hearing of the plans for STARLINE and how it would help Joe Royle fans rush to sign up.*

## STARLINE

The Special Meeting for fans on August 9th at the Queen Elizabeth Hall saw the launch of STARLINE, a new private members club, designed specifically to raise money for Joe Royle to spend on players, because out of ever £2 half goes back to the members in prize money the other half goes to Joe.

Entry is open to all supporters who hold a Latics Club Membership Card.

If you have not yet completed your form for STARLINE we would ask you to do so NOW and return it to Joe Royle as soon as possible so as to be included in the first draw.



# GAMES PEOPLE PLAY

| DATE           | OPPONENT          | ATT   | RES | PTS | POS | 1                | 2              | 3                 | 4               | 5                   | 6                      | 7              | 8                | 9            | 10                 | 11                     | 12              | 13                 | 14 |
|----------------|-------------------|-------|-----|-----|-----|------------------|----------------|-------------------|-----------------|---------------------|------------------------|----------------|------------------|--------------|--------------------|------------------------|-----------------|--------------------|----|
| 1988<br>Aug 15 | Blackburn Rovers  | 9,938 | 0-1 | 0   | 13  | Rhodes<br>Rhodes | Inwin<br>Inwin | Barlow<br>Barrett | Henry<br>Palmer | Barrett<br>Marshall | Holden A.<br>Holden A. | Adams<br>Adams | Richie<br>Richie | Burn<br>Burn | Miligan<br>Miligan | Holden R.<br>Holden R. | Palmer<br>Henry | Marshall<br>Barlow |    |
| Aug 27         | Swindon Town      | 6,242 | 1-1 | 1   |     |                  |                |                   |                 |                     |                        |                |                  |              |                    |                        |                 |                    |    |
| Sept 2         | Newcastle United  |       |     |     |     |                  |                |                   |                 |                     |                        |                |                  |              |                    |                        |                 |                    |    |
| Sept 9         | Plymouth Argyle   |       |     |     |     |                  |                |                   |                 |                     |                        |                |                  |              |                    |                        |                 |                    |    |
| Sept 16        | Stoke City        |       |     |     |     |                  |                |                   |                 |                     |                        |                |                  |              |                    |                        |                 |                    |    |
| Sept 23        | West Brom. Albion |       |     |     |     |                  |                |                   |                 |                     |                        |                |                  |              |                    |                        |                 |                    |    |
| Sept 30        | Sheffield United  |       |     |     |     |                  |                |                   |                 |                     |                        |                |                  |              |                    |                        |                 |                    |    |
| Oct 7          | Leicester City    |       |     |     |     |                  |                |                   |                 |                     |                        |                |                  |              |                    |                        |                 |                    |    |
| Oct 14         | Barnsley          |       |     |     |     |                  |                |                   |                 |                     |                        |                |                  |              |                    |                        |                 |                    |    |
| Oct 17         | AFC Bournemouth   |       |     |     |     |                  |                |                   |                 |                     |                        |                |                  |              |                    |                        |                 |                    |    |
| Oct 21         | Hull City         |       |     |     |     |                  |                |                   |                 |                     |                        |                |                  |              |                    |                        |                 |                    |    |
| Oct 28         | Middlesbrough     |       |     |     |     |                  |                |                   |                 |                     |                        |                |                  |              |                    |                        |                 |                    |    |
| Nov 4          | Wolverhampton     |       |     |     |     |                  |                |                   |                 |                     |                        |                |                  |              |                    |                        |                 |                    |    |
| Nov 11         | Bradford City     |       |     |     |     |                  |                |                   |                 |                     |                        |                |                  |              |                    |                        |                 |                    |    |
| Nov 18         | Sunderland        |       |     |     |     |                  |                |                   |                 |                     |                        |                |                  |              |                    |                        |                 |                    |    |
| Nov 25         | Oxford United     |       |     |     |     |                  |                |                   |                 |                     |                        |                |                  |              |                    |                        |                 |                    |    |
| Dec 2          | Brighton & H.A.   |       |     |     |     |                  |                |                   |                 |                     |                        |                |                  |              |                    |                        |                 |                    |    |
| Dec 9          | Ipswich Town      |       |     |     |     |                  |                |                   |                 |                     |                        |                |                  |              |                    |                        |                 |                    |    |
| Dec 16         | Blackburn Rovers  |       |     |     |     |                  |                |                   |                 |                     |                        |                |                  |              |                    |                        |                 |                    |    |
| Dec 23         | Warrford          |       |     |     |     |                  |                |                   |                 |                     |                        |                |                  |              |                    |                        |                 |                    |    |
| Dec 30         | West Ham United   |       |     |     |     |                  |                |                   |                 |                     |                        |                |                  |              |                    |                        |                 |                    |    |
| 1989<br>Jan 6  | Port Vale         |       |     |     |     |                  |                |                   |                 |                     |                        |                |                  |              |                    |                        |                 |                    |    |
| Jan 13         | Preston           |       |     |     |     |                  |                |                   |                 |                     |                        |                |                  |              |                    |                        |                 |                    |    |
| Jan 20         | Leeds United      |       |     |     |     |                  |                |                   |                 |                     |                        |                |                  |              |                    |                        |                 |                    |    |
| Jan 27         | Swindon Town      |       |     |     |     |                  |                |                   |                 |                     |                        |                |                  |              |                    |                        |                 |                    |    |
| Feb 3          | Newcastle United  |       |     |     |     |                  |                |                   |                 |                     |                        |                |                  |              |                    |                        |                 |                    |    |
| Feb 10         | West Brom. Albion |       |     |     |     |                  |                |                   |                 |                     |                        |                |                  |              |                    |                        |                 |                    |    |
| Feb 17         | Stoke City        |       |     |     |     |                  |                |                   |                 |                     |                        |                |                  |              |                    |                        |                 |                    |    |
| Feb 24         | Plymouth Argyle   |       |     |     |     |                  |                |                   |                 |                     |                        |                |                  |              |                    |                        |                 |                    |    |
| Mar 3          | Ipswich Town      |       |     |     |     |                  |                |                   |                 |                     |                        |                |                  |              |                    |                        |                 |                    |    |
| Mar 10         | Brighton & H.A.   |       |     |     |     |                  |                |                   |                 |                     |                        |                |                  |              |                    |                        |                 |                    |    |
| Mar 17         | Leicester City    |       |     |     |     |                  |                |                   |                 |                     |                        |                |                  |              |                    |                        |                 |                    |    |
| Mar 24         | Sheffield United  |       |     |     |     |                  |                |                   |                 |                     |                        |                |                  |              |                    |                        |                 |                    |    |
| Mar 31         | Barnsley          |       |     |     |     |                  |                |                   |                 |                     |                        |                |                  |              |                    |                        |                 |                    |    |
| Apr 7          | AFC Bournemouth   |       |     |     |     |                  |                |                   |                 |                     |                        |                |                  |              |                    |                        |                 |                    |    |
| Apr 14         | Hull City         |       |     |     |     |                  |                |                   |                 |                     |                        |                |                  |              |                    |                        |                 |                    |    |
| Apr 21         | Middlesbrough     |       |     |     |     |                  |                |                   |                 |                     |                        |                |                  |              |                    |                        |                 |                    |    |
| Apr 28         | Wolverhampton     |       |     |     |     |                  |                |                   |                 |                     |                        |                |                  |              |                    |                        |                 |                    |    |
| Apr 28         | Bradford City     |       |     |     |     |                  |                |                   |                 |                     |                        |                |                  |              |                    |                        |                 |                    |    |
| Apr 28         | Leeds United      |       |     |     |     |                  |                |                   |                 |                     |                        |                |                  |              |                    |                        |                 |                    |    |
| Apr 28         | Port Vale         |       |     |     |     |                  |                |                   |                 |                     |                        |                |                  |              |                    |                        |                 |                    |    |
| Apr 28         | West Ham United   |       |     |     |     |                  |                |                   |                 |                     |                        |                |                  |              |                    |                        |                 |                    |    |
| Apr 28         | Preston           |       |     |     |     |                  |                |                   |                 |                     |                        |                |                  |              |                    |                        |                 |                    |    |
| Apr 28         | Oxford United     |       |     |     |     |                  |                |                   |                 |                     |                        |                |                  |              |                    |                        |                 |                    |    |
| Apr 28         | Sunderland        |       |     |     |     |                  |                |                   |                 |                     |                        |                |                  |              |                    |                        |                 |                    |    |
| May 5          | F.A. CUP FINAL    |       |     |     |     |                  |                |                   |                 |                     |                        |                |                  |              |                    |                        |                 |                    |    |

Chelsea

Manchester City

Crystal Palace

Watford

Blackburn Rovers

Swindon Town

Barnsley

Ipswich Town

West Bromwich Albion

Leeds United

Sunderland

Bournemouth

Stoke City

Bradford City

Leicester City

ATHLETIC

Oxford United

Plymouth Argyle

Brighton

Portsmouth

Hull City

Shrewsbury

Birmingham City

Walsall

46

29

23

46

22

46

20

46

22

18

46

16

46

15

46

13

46

14

46

14

46

13

46

11

46

13

17

46

13

17

46

14

46

14

46

14

46

14

46

13

46

11

46

8

46

8

46

5

46

29

23

46

22

46

20

46

22

18

46

16

46

15

46

13

46

14

46

14

46

13

46

11

46

13

17

46

13

17

46

14

46

14

46

14

46

14

46

13

46

11

46

8

46

8

46

5

5

96

77

46

22

46

16

46

22

18

46

16

46

15

46

13

46

14

46

14

46

13

46

11

46

13

17

46

13

17

46

14

46

14

46

14

46

14

46

13

46

11

46

8

46

8

46

5

A

50

82

71

74

68

66

71

65

59

60

62

53

72

56

56

75

62

54

55

66

51

62

53

62

57

52

59

56

72

54

54

55

57

66

51

62

53

62

57

52

59

56

72

54

54

55

57

66

51

62

53

62

57

52

59

56

72

54

54

55

57

66

51

62

53

62

57

52

59

56

72

54

54

55

57

66

51

62

53

62

57

52

59

56

72

54

54

55

57

66

51

62

53

62

57

52

59

56

72

54

54

55

57

66

51

62

53

62

57

52

59

56

72

54

54

55

57

66

51

62

53

62

57

52

59

56

72

54

54

55

57

66

51

62

53

62

57

52

59

56

72

54

54

55

57

66

51

62

53

62

57

52

59

56

72

54

54

55

57

66

51

62

53

62

57

52

59

56

72

54

54

55

57

66

51

62

53

62

57

52

59

56

72

54

54

55

57

66

51

62

53

62

57

52

59

56

72

54

54

55

57

66

51

62

53

62

57

52

59

56

72

54

54

55

57

66

51

62

53

62

57

52

59

56

72

54

54

55

57

66

51

62

53

62

57

52

59

56

72

54

54

55

57

66

51

62

53

62

57

52

59

56

72

54

54

55

57

66

51

62

53

62

57

52

59

56

72

54

54

55

57

66

51

62

53

62

57

52

59

56

72

54

54

55

57

66

51

62

53

62

57

52

59

56

72

54

54

55

57

66

51

62

53

62

57

52

59

56

72

54

54

55

57

66

51

62

53

62

57

52

59

56

72

54

54

55

57

66

51

62

53

62

57

52

59

56

72

54

54

55

57

66

51

62

53

62

57

52

59

56

72

54

54

55

57

66

51

62

53

62

57

52

59

56

72

54

54

55

57

66

51

62

53

62

57

52

59

56

72

54

54

55

57

66

51

62

53

62

57

52

59

56

72

54

54

55

57

66

51

62

53

62

57

52

59

56

72

54

54

55

57

66

51

62

53

62

57

52

59

56

72

54

54

55

57

66

51

62

53

62

57

52

59

56

72

54

54

55

57

66

51

62

53

62

57

52

59

56

72

54

54

55

57

66

51

62

53

62

57

52

59

56

72

54

54

55

57

66

51

62

53

62

57

52

59

56

72

54

54

55

57

66

51

62

53

62

57

52

59

56

72

54

54

55

57

66

51

62

53

62

57

52

59

56

72

54

54

55

57

66

51

62

53

62

57

52

59

56

72

54

54

55

57

66

51

62

53

62

57

52

59

56

72

54

54

55

57

66

51

62

53

62

57

52

59

56

72

54

54

55

57

66

51

62

53

62

57

52

59

56

72

54

54

55

57

66

51

62

53

62

57

52

59

56

72

54

54

55

57

66

51

62

53

62

57

52

59

56

72

54

54

55

57

66

51

62

53

62

57

52

59

56

72

54

54

55

57

66

51

62

53

62

57

52

59

56

72

54

5

**A MESSAGE FROM THE CHAIRMAN**  
Please be responsible

Welcome back to a new season at Boundary Park a rather different looking place from the ground you saw last May. Many changes have been obvious and have already been referred to before and elsewhere. But I would like to draw attention to one major alteration in particular, namely the removal of the fences in front of the three Members Paddocks. This move, which I am sure is welcomed by the occupants of those areas, does, however, put a responsibility on those members not to take advantage of this relaxation and put the Club at risk by attempting to get on to the pitch. I would even ask you to stop anybody you see trying it because the immediate response to such an act would surely be the replacing of the fences. I have pleaded long and hard for the removal of the fences so please don't let me or your colleagues down by doing something daft. Elsewhere we have tightened up certain safety areas but with your normal common sense and a positive response to requests from police or stewards I am sure we can maintain a safe and friendly atmosphere at Boundary Park. Thank you for your support as 'here we go again'.

**IAN H. STOTT — Chairman**

| FINAL TABLE 1988/89<br>BARCLAYS LEAGUE |    |    |    |    |    |    |     |  |  | DIVISION TWO |  |  |  |  |  |  |  |  |  |
|--|----|----|----|----|----|----|-----|--|--|--------------|--|--|--|--|--|--|--|--|--|
|  | P  | W  | D  | L  | F  | A  | Pts |  |  |              |  |  |  |  |  |  |  |  |  |
| Chelsea                                | 46 | 29 | 12 | 5  | 96 | 50 | 99  |  |  |              |  |  |  |  |  |  |  |  |  |
| Manchester City                        | 46 | 23 | 13 | 10 | 77 | 53 | 82  |  |  |              |  |  |  |  |  |  |  |  |  |
| Crystal Palace                         | 46 | 23 | 12 | 11 | 71 | 49 | 81  |  |  |              |  |  |  |  |  |  |  |  |  |
| Watford                                | 46 | 22 | 12 | 12 | 74 | 48 | 78  |  |  |              |  |  |  |  |  |  |  |  |  |
| Blackburn Rovers                       | 46 | 22 | 11 | 13 | 74 | 48 | 77  |  |  |              |  |  |  |  |  |  |  |  |  |
| Swindon Town                           | 46 | 20 | 16 | 10 | 68 | 53 | 76  |  |  |              |  |  |  |  |  |  |  |  |  |
| Barnsley                               | 46 | 20 | 14 | 12 | 66 | 58 | 74  |  |  |              |  |  |  |  |  |  |  |  |  |
| Ipswich Town                           | 46 | 22 | 7  | 17 | 71 | 61 | 73  |  |  |              |  |  |  |  |  |  |  |  |  |
| West Bromwich Albion                   | 46 | 18 | 18 | 10 | 65 | 41 | 72  |  |  |              |  |  |  |  |  |  |  |  |  |
| Leeds United                           | 46 | 17 | 16 | 13 | 59 | 50 | 67  |  |  |              |  |  |  |  |  |  |  |  |  |
| Sunderland                             | 46 | 16 | 15 | 15 | 60 | 60 | 63  |  |  |              |  |  |  |  |  |  |  |  |  |
| Bournemouth                            | 46 | 18 | 8  | 20 | 53 | 62 | 62  |  |  |              |  |  |  |  |  |  |  |  |  |
| Stoke City                             | 46 | 15 | 14 | 17 | 57 | 72 | 59  |  |  |              |  |  |  |  |  |  |  |  |  |
| Bradford City                          | 46 | 13 | 17 | 16 | 52 | 59 | 58  |  |  |              |  |  |  |  |  |  |  |  |  |
| Leicester City                         | 46 | 13 | 16 | 17 | 56 | 63 | 55  |  |  |              |  |  |  |  |  |  |  |  |  |
| ATHLETIC                               | 46 | 11 | 21 | 14 | 75 | 72 | 54  |  |  |              |  |  |  |  |  |  |  |  |  |
| Oxford United                          | 46 | 14 | 12 | 20 | 62 | 70 | 54  |  |  |              |  |  |  |  |  |  |  |  |  |
| Plymouth Argyle                        | 46 | 14 | 12 | 20 | 55 | 66 | 54  |  |  |              |  |  |  |  |  |  |  |  |  |
| Brighton                               | 46 | 14 | 9  | 23 | 57 | 66 | 51  |  |  |              |  |  |  |  |  |  |  |  |  |
| Portsmouth                             | 46 | 13 | 12 | 21 | 53 | 62 | 51  |  |  |              |  |  |  |  |  |  |  |  |  |
| Hull City                              | 46 | 11 | 14 | 21 | 52 | 68 | 47  |  |  |              |  |  |  |  |  |  |  |  |  |
| Shrewsbury Town                        | 46 | 8  | 18 | 20 | 40 | 67 | 42  |  |  |              |  |  |  |  |  |  |  |  |  |
| Birmingham City                        | 46 | 8  | 11 | 27 | 31 | 76 | 35  |  |  |              |  |  |  |  |  |  |  |  |  |
| Walsall                                | 46 | 5  | 16 | 25 | 41 | 80 | 31  |  |  |              |  |  |  |  |  |  |  |  |  |

Player Withdrawn. After Extra Time. ● Substitute Used. \* Number of goals scored. These Figures are the Copyright of the Football League Ltd and are not to be reproduced without permission.



Design & Build Projects

Public Sector Works

*Team up with*

Office Developments



CONSTRUCTION

Residential Developments

Industrial Units

Small Works

Ashdene & Windsor Construction Limited  
Tel: 061 624 1956 Fax: 061 627 5423

**TEAM SPIRIT-  
REPLI-KIT.**



**UMBRO  
REPLI-KIT**

TOP TEAM REPLICAS FOOTBALL KIT



**umbro**  
THE CHOICE OF CHAMPIONS



# MATCH & BALL SPONSORS

| HOME FIXTURES                           | Match Sponsors            | Matchball Sponsors              |
|---|---------------------------|---------------------------------|
| <b>WATFORD</b> Tues 22.8.89             | Norman Leisure            | Win & Terry Kerr                |
| <b>SWINDON TOWN</b> Sat 26.8.89         | British Telecom M/cr Dist | D. Troman                       |
| <b>PLYMOUTH ARGYLE</b> 9.9.89           | Warwick Plumbing Sales    | I.C.E. (U.K.) Ltd               |
| <b>WEST BROMWICH A.</b> Sat 23.9.89     | Cheshire Light Tractors   | Hermetic Rubber                 |
| <b>LEICESTER CITY</b> Sat 30.9.89       | Platt & Hill              | Kenyon Paints                   |
| <b>BARNSELY</b> Sat 7.10.89             | Ken Rosebury & Co Ltd     | Bentwood Brothers               |
| <b>MIDDLESBROUGH</b> Sat 21.10.89       | Dannimac                  | Arkol Insurance                 |
| <b>BRADFORD CITY</b> Tues 31.10.89      | Inter City Property Group | Rollite Blinds                  |
| <b>SUNDERLAND</b> Sat 4.11.89           | Able Hire Company         | Paterbridge Ltd                 |
| <b>BRIGHTON &amp; H.A.</b> Sat 18.11.89 | Ashdene & Windsor Ltd     | Junior Latics Club              |
| <b>BLACKBURN ROVERS</b> Fri 1.12.89     | Lookers PLC               | Steetley Construction Materials |
| <b>PORT VALE</b> Tues 26.11.89          | Monty's                   | I.C.E. (U.K.) Ltd               |
| <b>PORTSMOUTH</b> Sat 30.12.89          | Moorside Metal Products   | K. Fisher Textile Machinery     |
| <b>NEWCASTLE UNITED</b> Sat 20.1.90     | Royal Mail                | Evans & Harrison                |
| <b>STOKE CITY</b> Sat 10.2.90           | O.M.B.C.                  | Newbank Garden Centre           |
| <b>IPSWICH TOWN</b> Sat 24.2.90         | Dannimac                  | Royal Bank of Scotland          |
| <b>SHEFFIELD UNITED</b> Sat 10.3.90     | West Pennine Trucks       | Neil Mellor (Butchers)          |
| <b>BOURNEMOUTH</b> Tues 20.3.90         | Owl Plastics              | Rollite Blinds                  |
| <b>HULL CITY</b> 24.3.90                | Ashdene & Windsor         | Kenyon Paints                   |
| <b>WOLVES</b> Fri 6.4.90                | Madge & Hoyle             | Cook & Hickman                  |
| <b>LEEDS UNITED</b> Fri 13.4.90         | Bovis Urban Renewal       | Steetley Construction Materials |
| <b>WEST HAM UNITED</b> Sat 21.4.90      | Crompton Engineering Co   | Mardale Construction            |
| <b>OXFORD UNITED</b> Sat 28.4.90        | J. Clayton (o/m) Ltd      | Mark Smith                      |

**mitre®**  
**- official**  
**suppliers**  
**of goals**  
**in today's**  
**game**



**DELTA 1000**



**QUATRO**



**mitre**

**QUALITY COMES FIRST**



## CHELSEA ON THEIR WAY

Chelsea, who ran away with the Second Division Championship last season, started the new season on a winning note, breaking out of a defensive deadlock at Wimbledon to win with a late goal from Kevin Wilson.

With goalkeeper Dave Beasant in great form against his former club, Chelsea looked firm at the back and showed the ability to break and snatch a goal out of nothing. Manager Bobby Campbell believes his team can now make a serious bid for the Championship, an honour Chelsea last won back in 1955.

Former Oldham striker Mike Quinn made a great start with his new club, scoring four times as Newcastle crushed Leeds 5-2 at St James Park. Mike's first goal came from a penalty, and was quickly nullified when Bobby Davison replied for the visitors. Newcastle were trailing 1-2 at the interval but Quinn scored three times after the break to send Leeds' £3-million team reeling to defeat.

Newcastle were relegated from the First Division at the end of last season but the loyalty of their fans is never in doubt. A crowd of 24,482 saw the Leeds game. Newcastle attracted only five gates larger than that in the First Division last season.

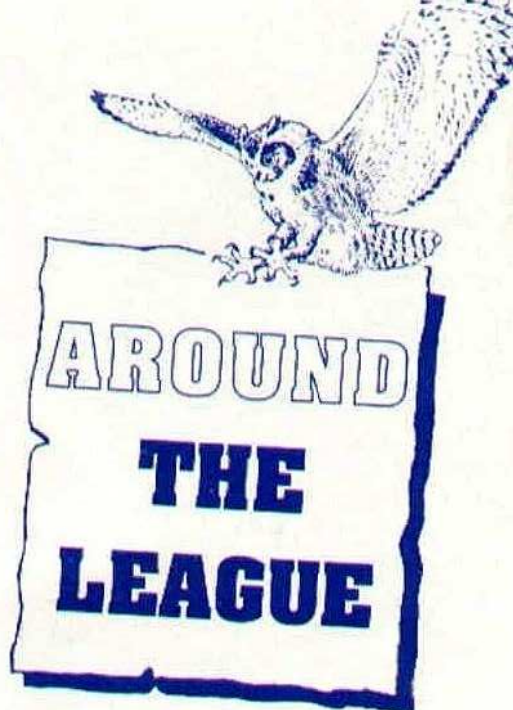
North-East rivals Middlesbrough, who also dropped out of the top section in May, drew 21,727 for the visit of promoted Wolves. Only four of last season's First Division games attracted larger crowds. The Boro, too, started with a good win, two goals from Bernie Slaven, plus singles from Mark Proctor and Peter Davenport giving them a 4-2 win over Wolves.

League newcomers Maidstone United deserved a point from their first-ever League match at Peterborough. They were unlucky not to take the lead in the 55th minute when Mark Golley's superb shot was equally well saved by Tony Godden. Then, with 10 minutes remaining, Mike Halsall nipped in for Peterborough's winner.

Maidstone skipper Tony Pamphlett, who missed the game through injury, has given up his job as painter and decorator, to try and make a name for himself in League football. He was once a Millwall apprentice but didn't make the grade. He went into non-League football but then skippered Maidstone to the Championship of the GM-Vauxhall Conference last season.

Now 29, Pamphlett is taking what he knows will be his last chance to succeed in League football.

Charlton are hoping their move back to The Valley can be speeded up. Their opening game in the First Division, against Derby, drew a mere 5,500 — the lowest attendance in the top two divisions. A great display by England 'keeper Peter Shilton denied Charlton victory. But it's not points that are most important to Charlton right now. They want to go back 'home' and hope they will be there before Christmas.



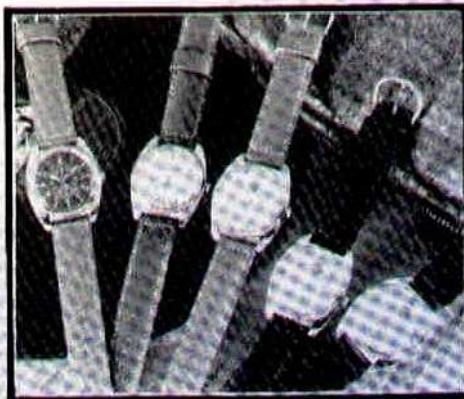
## LORUS QUARTZ

## SOCCER QUIZ

- Q1 Besides Gary Lineker, who netted 6 times, which other England player scored in the 1986 World Cup Finals in Mexico?
- Q2 Name three clubs for whom Scott McGarvey has played excluding Oldham Athletic?
- Q3 Swindon Town won the Football League Cup in season 1968/69 — but what trophy did they win in 1970?

Win one of two Lorus Quartz watches in this easy to enter competition. Just answer the questions above on a postcard or sealed down envelope. First two correct entries pulled from the postbag on Friday 1st September will win a magnificent Lorus Watch. Send your entries to:

Lorus Watch Competition  
O.A.F.C., Boundary Park, Oldham. OL1 2PA



### 'MODERN RETRO' WATCHES FROM LORUS

The smart man about town likes the 'trad' looks of these Lorus watches from the 'Modern Retro' range, but won't have to sacrifice modern advantages of quartz reliability, splash resistency and luminous dials. Note the heavy set cases, padded seam stitched leather straps and traditional dial designs. Another 'plus' is the affordable price. They cost from about £27.99 to £34.99 depending on style.

Lorus watches are available from jewellers throughout the UK. Colour transparencies on request.



# TODAY'S LINE-UP

## OFFICIALS

### Referee

Mr R. F. NIXON  
from West Kirby.

### Linesmen



RED TRIM

Mr S. Cawtherley  
from Blackburn.



YELLOW TRIM

Mr P. Newall  
from Widnes

## OLDHAM ATHLETIC

Andy Rhodes  
Denis Irwin  
Earl Barrett  
Roger Palmer  
Ian Marshall  
Andy Holden  
Neil Adams  
Andy Ritchie  
Frank Bunn  
Mike Milligan  
Rick Holden

Manager: Joe Royle  
Colours: All Blue



## SWINDON TOWN

1 Fraser Digby  
2 Dave Hockaday  
3 Phil King  
4 Alan McLoughlin  
5 Tim Parkin  
6 Colin Calderwood  
7 Tony Galvin  
8 Duncan Shearer  
9 Steve White  
10 Ross MacLaren  
11 Fitzroy Simpson  
12  
14

Manager: Ossie Ardiles  
Colours: Red/White



TODAY'S  
MATCHBALL  
SPONSOR

STOCKFIELD  
PROPERTIES

Don Troman

*Latigue*

Sport & Leisurewear

A NEW NAME –  
A NEW CHOICE

*Latigue*

Sport & Leisurewear  
Boundary Park  
Oldham. OL1 2PA  
061 652 0966

Open Monday-Friday 9am-5pm  
Saturday 9am-4pm